



*Innovative Solutions  
for Construction Chemistry*

# *PRODUCTS CATALOGUE*



## QUALITY AND THE ENVIRONMENT MANAGEMENT SYSTEM

Our strong commitment to Quality and the Environment policies, lead us to the implementation of an Integrated Management System based on **ISO 9001:2008** and **ISO 14001:2004** standards, and certified by Bureau Veritas Quality International.

The certification of both standards awarded by **Bureau Veritas Quality International** on date November 27, 2003, responds to our ongoing commitment to R&D for new products and systems. This allows us to offer environmentally friendly, high quality solutions and latest technology guaranteed for proven and tested experience under the most adverse conditions throughout the entire world geography.



## Quality and the Environment policies

The General Management assumes the commitment contained in our Quality and Environment Policy to satisfy the customer, establish a continuous improvement of the processes, train and motivate staff, prevent pollution, reduce polluting emissions, and comply with current legislation. Responsible compliance will lead us to the satisfaction that our industrial activity contributes to maintaining a Sustainable Development for Society



## COMPANY

**DRIZORO S.A.U.** is a Spanish company founded in 1977, starting its activity as a manufacturer of chemical products for construction. It is now a benchmark for the sector in solutions for civil engineering and building, in the fields of waterproofing, restoration, protection and finishing of concrete structures.

From our Headquarters and Production Center in Torrejón de Ardoz (Madrid-SPAIN) all the operations of the different departments are directed; Production, R&D, Laboratory, Technical, Sales, Marketing and Administration.



## COMMITMENT TO RESEARCH, DEVELOPMENT AND INNOVATION

Our continuous commitment to research and development policies, investing both in human resources and in technical means, allows us to offer the market solutions based on the high quality and latest technology systems, and provide innovative solutions supported also by a proven and tested experience under the most adverse conditions throughout the entire world geography.



## TECHNICAL SUPPORT

Our Technical and Commercial Department and Sales Department, consisting of technical professionals with extensive experience in the sector, offers advice in a personalized manner both in the design phase and in the execution phase, with the aim of reaching an optimal prescription and implementation of our proposed products and systems

## DRIZORO® IN THE WORLD. INTERNATIONAL PRESENCE

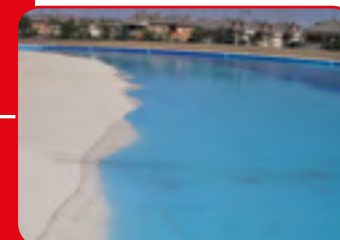
From the beginning of its activities, DRIZORO® S.A.U. has developed the expansion of its activities with a marked tendency towards the search for new markets. So today the company has a broad international presence that is consolidated in the form of Delegations and Official Distributors in more than 35 countries throughout the five continents:



<b>1</b>	Products and systems for the protection and waterproofing	Pág. 5
<b>2</b>	Products and systems for the waterproofing, decoration and protection of façades and surfaces	Pág. 11
<b>3</b>	Products and systems for the repair, reinforcement and surface restoration of concrete structures	Pág. 15
<b>4</b>	Products and systems for special applications	Pág. 19
<b>5</b>	Products and systems for the repair, screeding and levelling of flooring	Pág. 23
<b>6</b>	Products and systems for the protection and finishing of surfaces and flooring	Pág. 27
<b>7</b>	Products and systems for the sealing of joints	Pág. 33
<b>8</b>	Admixtures, fibers, curing agents, demoulding agents, solvents, cleaners, meshes and veils	Pág. 37
<b>9</b>	Tiling and grouting mortars & adhesives for ceramics and tiles	Pág. 42
<b>10</b>	Products and systems for the injection and filling of cracks, voids and interstices	Pág. 44

## Products and systems for the protection and waterproofing

# 1



# 1 PRODUCTS AND SYSTEMS FOR THE PROTECTION AND WATERPROOFING

## 1.1 Cement-based resin coatings and mortars

Product Name	Recommended Coverage	Packaging
<b>MAXSEAL®</b> Cement-based waterproof coating for concrete structures and masonry subject to positive/negative hydrostatic pressure conditions. Suitable for drinking water. Available in grey and white, and other colours: <b>MAXSEAL® DECOR</b> .	2,0 - 3,0 kg/m <sup>2</sup>	25 kg bags and drums 5 kg cans
<b>MAXSEAL® -M</b> One component, polymer-modified, cement-based waterproof coating for concrete structures and masonry subject to positive/negative hydrostatic pressure conditions. Available in grey and white colours.	2,0 - 3,0 kg/m <sup>2</sup>	25 kg bags and 5 kg cans
<b>MAXSEAL® FLEX</b> Two-component, flexible cement-based waterproofing and protective coating for concrete structures and masonry subject to positive/negative hydrostatic pressure conditions. Suitable for drinking water. Available in grey and white, and other colours: <b>MAXSEAL® FLEX DECOR</b> , and in two texture versions: standard and smooth.	2,0 - 3,0 kg/m <sup>2</sup>	35/32 kg and 7 kg pre-weighed sets
<b>MAXSEAL® FLEX -M</b> One-component, flexible cement-based waterproofing and protective coating for concrete structures and masonry subject to positive and negative hydrostatic pressure conditions. Suitable for drinking water. Available in grey and white colours.	2,0 - 3,0 kg/m <sup>2</sup>	22 kg bags
<b>MAXSEAL® FLEX EXPRESS</b> Two-component, flexible cement-based waterproof coating for concrete and masonry subject to positive and negative hydrostatic pressure conditions with very short curing time.	2,0 - 3,0 kg/m <sup>2</sup>	35 kg and 7 kg pre-weighed sets
<b>MAXSEAL® SUPER</b> Osmotic, cement-based crystalline waterproof coating for concrete structures and masonry subject to positive and negative hydrostatic pressure conditions, and applicable also by dry shake method. Suitable for drinking water. Available in grey and white colours.	2,0 - 2,5 kg/m <sup>2</sup> 1,5 - 2,5 kg/m <sup>2</sup> dusting method.	25 kg bags and 25 kg cans
<b>MAXSEAL® FOUNDATION</b> One component, cement-based waterproof and protective coating for concrete structures and masonry subject to positive/negative hydrostatic pressure conditions.	2,0 - 3,0 kg/m <sup>2</sup>	25 kg bags and 25 kg cans
<b>MAXPLUG®</b> Quick-setting hydraulic mortar for stopping of active running water leaks under hydrostatic pressure.	1,6 kg/l	25 kg drums and 5 kg cans
<b>MAXPLUG® -R</b> Highly quick-setting hydraulic mortar for stopping of active running water leaks under hydrostatic pressure, and suitable for low temperatures applications.	1,6 kg/l	25 kg drums and 5 kg cans
<b>CONCRESEAL® PLASTERING</b> Cement-based waterproofing and levelling mortar with decorative texture for finishing and protection of concrete and masonry from weathering, water and marine environment (3-5 mm application thickness). Available in grey and white colours, and smooth texture version: "Regular".	1,7 kg/m <sup>2</sup> -mm	25 kg bags
<b>CONCRESEAL® PLASTERING -M</b> One-component, cement-based waterproofing and levelling mortar with decorative texture for finishing and protection of concrete and masonry from weathering, water and marine environment (3-5 mm application thickness). Available in grey and white colours, and smooth texture version: "Regular".	1,7 kg/m <sup>2</sup> -mm	25 kg bags

# 1 PRODUCTS AND SYSTEMS FOR THE PROTECTION AND WATERPROOFING

## 1.2 Admixtures for the protection and waterproofing of concretes

Product Name	Recommended Coverage	Packaging
<b>MAXSEAL® SUPER ADMIX</b> Crystalline waterproofing powder admixture for sealing of capillarity network of concretes and mortars.	0,8-2% (w/w cement)	20 kg bags
<b>MAXSEAL® INHIBITOR ADMIX</b> Migrating corrosion inhibitor liquid admixture for protection of reinforced concrete.	1 l/m <sup>3</sup> concrete	25 l jerry cans and 220 l drums

## 1.3 Acrylic-based resin coatings for roofing

Product Name	Recommended Coverage	Packaging
<b>MAXELASTIC®</b> One-component, acrylic, elastomeric waterproof coating for roofs, balconies and façades. Available in 6 different colours, and fiber-reinforced version.	2,0-3,0 kg/m <sup>2</sup>	25 kg and 5 kg drums
<b>MAXELASTIC® STONE</b> One-component, acrylic, elastomeric wearing protective coating with aggregates for <b>MAXELASTIC</b> system on roofs and balconies subject to pedestrian traffic. Available in 6 different colours.	1,7 kg/m <sup>2</sup> -mm	25 kg and 5 kg drums
<b>MAXELASTIC® PAV</b> One-component, acrylic, elastomeric wearing protective and waterproof coating with aggregates and fiber-reinforced for roofs and balconies subject to pedestrian traffic. Available in 6 different colours.	2,0 kg/m <sup>2</sup> -mm	25 kg and 5 kg drums
<b>MAXELASTIC® TH</b> One-component, acrylic, elastomeric coating formulated with hollow microspheres and sun reflective properties suitable for waterproofing and thermal insulation of roofs and façades.	2,0 - 3,0 kg/m <sup>2</sup>	25 kg drums
<b>MAXSEAL® Y</b> One-component, acrylic, elastomeric waterproof coating for gypsum or plaster substrates subject to positive hydrostatic pressure conditions.	1,0 - 2,0 kg/m <sup>2</sup>	25 kg drums

## 1.4 Epoxy-based resin coatings for waterproofing and primer

Product Name	Recommended Coverage	Packaging
<b>MAXEPOX® FLEX</b> High-performance, 100% solid and solvent-free, two-component, flexible epoxy waterproofing and protective coating for metal surfaces, concretes and mortars. Suitable for drinking water. Available in 4 different colours.	0,6 - 0,7 kg/m <sup>2</sup>	20 kg and 10 kg pre-weighed sets
<b>MAXEPOX® PRIMER W</b> Two-component, water-based, epoxy primer suitable for epoxy or polyurethane waterproofing systems on concretes and mortars.	0,2 - 0,3 kg/m <sup>2</sup>	20 kg and 10 kg pre-weighed sets

## 1.5 Bitumen & Epoxy-based resin coatings for waterproofing

Product Name	Recommended Coverage	Packaging
<b>MAXEPOX® TAR</b> Two-component, tar-modified epoxy waterproofing and protective coating for metal surfaces, concretes and mortars.	0,4 - 0,8 kg/m <sup>2</sup>	31 kg pre-weighed sets
<b>MAXEPOX® TAR -F</b> Flexible, two-component, tar-modified epoxy waterproofing and protective coating for metal surfaces, concretes and mortars.	0,8 - 1,0 kg/m <sup>2</sup>	25 kg pre-weighed sets

# 1 PRODUCTS AND SYSTEMS FOR THE PROTECTION AND WATERPROOFING

## MAXEPOX® TAR -K

Flexible, two-component, solvent-free, tar-modified epoxy waterproofing and protective coating formulated without coal tar for metal surfaces, concretes and mortars.

Recommended Coverage	Packaging
0,6 - 0,7 kg/m <sup>2</sup>	25 kg pre-weighed sets

### 1.6 Polyurethane-based resin coatings for swimming pools and potable water tanks

## MAXURETHANE® FLEX

High-performance, 100% solid and solvent-free, two-component, flexible aromatic polyurethane coating for waterproofing and protection of potable water tanks, food industry uses, and high chemical protection. Suitable for drinking water. Available in 4 different colours.

Recommended Coverage	Packaging
0,6 - 0,8 kg/m <sup>2</sup>	25 kg drums

## MAXELASTIC® PUR POOL

High-performance, one-component, water-based flexible aliphatic polyurethane coating with UV-ray resistance for waterproofing and protection of swimming-pools and reservoirs. Available in 5 different colours.

Recommended Coverage	Packaging
1,0 - 1,2 kg/m <sup>2</sup>	22 kg drums

## MAXURETHANE® POOL

Two-component, water transparent aliphatic polyurethane coating for protection and finishing of **CONCRESEAL® PLASTERING** system applied in swimming pools and fountains.

Recommended Coverage	Packaging
0,15 - 0,2 kg/m <sup>2</sup>	25 kg drum and 5 kg cans

### 1.7 Polyurethane-based resin coatings for roofing

## MAXELASTIC® PUR -HW

One-component, water-based hybrid polyurethane, elastomeric waterproofing and protective liquid membrane resistant to abrasion and UV for roofs and outdoor areas. Available in 3 different colours.

Recommended Coverage	Packaging
1,6 - 2,0 kg/m <sup>2</sup>	25 kg drums and 5 kg cans

## MAXELASTIC® PUR -EW

One-component, water-based aliphatic polyurethane, elastomeric waterproofing and protective liquid membrane resistant to abrasion and UV for roofs and outdoor areas. Available in 3 different colours.

Recommended Coverage	Packaging
1,6 - 2,0 kg/m <sup>2</sup>	22 kg drums

## MAXELASTIC® PUR THERMOCOAT

One-component, water-based hybrid polyurethane waterproofing and sun reflective coating formulated with hollow microspheres suitable for thermal insulation of roofs and façades.

Recommended Coverage	Packaging
1,2 - 1,8 kg/m <sup>2</sup>	22 kg drums

## MAXELASTIC® PUR CAT -W

Catalyst suitable for fast drying/curing of water-based acrylic/polyurethane waterproof coatings.

Recommended Coverage	Packaging
0,25 kg per 25 kg	0,5 l cans

## MAXELASTIC® PUR

One-component, solvent-based aromatic polyurethane elastomeric, waterproofing and protective liquid membrane for roofs and outdoor areas. Available in 5 different colours.

Recommended Coverage	Packaging
Standard: 1,2-1,8 kg/m <sup>2</sup> ETAG 005: 2,5 - 2,7 kg/m <sup>2</sup>	25 kg drums

## MAXELASTIC® PUR -E

One-component, solvent-based aliphatic polyurethane protective coating resistant to both abrasion and UV for roofs and areas waterproofed with **MAXELASTIC PUR®**, and subject to pedestrian traffic. Available in 4 different colours.

Recommended Coverage	Packaging
0,4 - 0,5 kg/m <sup>2</sup>	20 kg and 10 kg drums

# 1 PRODUCTS AND SYSTEMS FOR THE PROTECTION AND WATERPROOFING

## MAXELASTIC® PUR -F

One-component, solvent-based aliphatic polyurethane protective coating resistant to both abrasion and UV for roofs and areas waterproofed with **MAXELASTIC® PUR**, and subject to pedestrian/wheeled traffic. Available in 4 different colours.

Recommended Coverage	Packaging
0,4 - 0,5 kg/m <sup>2</sup>	10 kg drums

## MAXELASTIC® PUR CAT

Catalyst suitable for fast drying/curing of **MAXELASTIC® PUR** system.

Recommended Coverage	Packaging
4 % w/w	1 l cans

## MAXELASTIC® PUR PRIMER

Two-component, solvent-free, epoxy primer with low viscosity suitable for **MAXELASTIC® PUR** system applied in permanent immersion applications.

Recommended Coverage	Packaging
0,25 - 0,3 kg/m <sup>2</sup>	10 kg and 5 kg pre-weighed sets

## MAXELASTIC® TRANS

One-component, solvent-based aliphatic and transparent polyurethane, elastomeric, waterproofing and protective liquid membrane for roofs, balconies and outdoor areas covered with ceramic tiles.

Recommended Coverage	Packaging
1,0-1,2 kg/m <sup>2</sup>	25 kg drum and 5 kg cans

## MAXELASTIC® TRANS -M

One-component, solvent-based aliphatic polyurethane coating with satin appearance for finishing of areas waterproofed with **MAXELASTIC® TRANS** system.

Recommended Coverage	Packaging
0,25 kg/m <sup>2</sup>	5 kg and 1 kg cans

## MAXPRIMER® PUR

Solvent-based silane primer suitable for solvent-based polyurethane resin systems applied on non-porous/low porosity surfaces.

Recommended Coverage	Packaging
0,25 - 0,3 kg/m <sup>2</sup>	5 l and 1 l cans

### 1.8 Bitumen & Polyurethane-based resin coating for waterproofing

## MAXELASTIC® PUR BIT

One-component, flexible, bitumen-modified polyurethane-based waterproofing and protective coating for metal surfaces, concretes and mortars.

Recommended Coverage	Packaging
1,0 - 1,8 kg/m <sup>2</sup>	25 kg drums

### 1.9 Polyurea-based resin coatings for waterproofing and protection

## MAXELASTIC® POLY

Hot-applied, two-component, 100% solid and solvent-free, aromatic polyurea waterproofing and protective coating for concrete surfaces. Suitable for drinking water.

Recommended Coverage	Packaging
2,0 kg/m <sup>2</sup>	450 kg pre-weighed sets

## MAXELASTIC® POLY -F

Cold-applied, two-component, solvent-free, aliphatic polyurea waterproofing and protective coating for concrete surfaces.

Recommended Coverage	Packaging
0,8 - 1,0 kg/m <sup>2</sup>	20 kg and 10 kg pre-weighed sets

## MAXELASTIC® POLY -M

One-coat and cold-applied, two-component, solvent-free, aromatic polyurea waterproofing and protective coating for concrete surfaces.

Recommended Coverage	Packaging
1,2 - 2,0 kg/m <sup>3</sup>	20 kg pre-weighed sets

## MAXELASTIC® POLY -P

One-component, solvent-based polyurethane primer with low viscosity suitable for bonding between polyurea coats.

Recommended Coverage	Packaging
0,15 - 0,3 kg/m <sup>2</sup>	5 kg cans

# 1 PRODUCTS AND SYSTEMS FOR THE PROTECTION AND WATERPROOFING

## 1.10 Drainage membranes

### MAXDRAIN® -P8

HDPE drainage and protective membrane for foundations, retaining walls and floor slabs.



Recommended Coverage

Packaging

20 m length x 2,1 m wide rolls (42 m<sup>2</sup>)

### MAXDRAIN® -P8 -GW

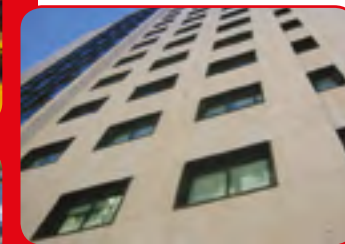
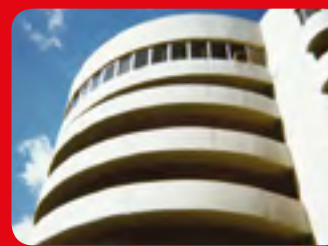
Drainage and protective systems composed of HDPE membrane and thermo-welded geotextile sheet for foundations, retaining walls and floor slabs.



20 m length x 2,1 m wide rolls (42 m<sup>2</sup>)

## Products and systems for the waterproofing, decoration and protection of façades and surfaces

# Z



## 2.1 Cement-based rendering/plastering mortars and coatings

Product Name	Recommended Coverage	Packaging
<b>CONCRESEAL® TOP</b> Single-layer, cement-based waterproofing, protective and decorative rendering/plastering mortar for façades, masonry walls and others surfaces. Available in 8 different colours, and 3 finishing versions: <b>TOP-P</b> (Pebble dash/Spar finish; 10-12 mm thick), <b>TOP-R</b> (Scrap/Stucco finish: 10-15 mm thick), and <b>TOP-F</b> (Sponge float finish: 10-15 mm thick).	TOP-P: 1,3-1,5 kg/m <sup>2</sup> ·mm TOP-R: 1,3-1,5 kg/m <sup>2</sup> ·mm TOP-F: 1,3-1,5 kg/m <sup>2</sup> ·mm	25 kg bags
<b>MAXQUICK®</b> Cement-based, waterproofing, protective and decorative coating with smooth texture for indoor/outdoor concrete and mortar surfaces. Available in 8 different colours.	0,4 - 1,0 kg/m <sup>2</sup>	25 kg drums
<b>MAXQUICK® ROLL</b> Cement-based, waterproofing, protective and decorative coating applicable in one layer for indoor/outdoor concrete and mortar surfaces. Available in grey and white colours.	1,0 - 1,5 kg/m <sup>2</sup>	25 kg bags
<b>CONCRESEAL® -1</b> Micro-fine cement mortar for small thickness coating and very smooth texture decorative finish. Available in white and grey colours.	0,4 - 0,5 kg/m <sup>2</sup>	29 kg pre-weighed sets
<b>2.2 Lime-based rendering/plastering mortars</b>		
<b>MAXMORTER® CAL</b> Lime-based repair, pointing and rendering/plastering mortar for indoor/outdoor masonry walls.	1,6 kg/m <sup>2</sup> ·mm	25 kg bags
<b>MAXMORTER® CAL -F</b> Lime-based levelling and rendering/plastering mortar with fine texture for indoor/outdoor masonry walls.	1,25 kg/m <sup>2</sup> ·mm	25 kg bags
<b>MAXMORTER® CAL -GLAZE</b> Lime-based levelling and cosmetic mortar with very fine texture, bright and stucco appearance for indoor/outdoor masonry walls or surfaces treated with <b>MAXMORTER® CAL -F</b> .	0,65 kg/m <sup>2</sup> ·mm	15 kg bags
<b>MAXGLAZE® CAL</b> Water-based liquid gel composed of waxes for protection and glossy finishing of surfaces treated with <b>MAXMORTER® CAL GLAZE</b> .	0,1-0,2 kg/m <sup>2</sup>	1 kg drums
<b>2.3 Rendering/plastering mortars and systems for treatment of rising dampness</b>		
<b>THERMOSAN®</b> Cement-based macroporous mortar for treatment of concrete and masonry units subject to rising dampness.	1,0 - 1,2 kg/m <sup>2</sup> ·mm	25 kg bags
<b>THERMOSAN® -F</b> Cement-based decorative and protective microporous mortar for finishing of <b>THERMOSAN®</b> system. Available in 8 different colours.	1,8-2,0 kg/m <sup>2</sup> ·mm	25 kg bags
<b>THERMOSAN® CAL</b> Lime-based macroporous mortar for treatment of lime masonry units subject to rising dampness.	1,0 kg/m <sup>2</sup> ·mm	15 kg bags
<b>MAXCLEAR® INJECTION</b> Concentrated and water based siloxane injection system for treatment of concrete and masonry units subject to rising dampness.	20-40 l emulsion (1:15)/m <sup>2</sup> (Holes spaced to 10 cm)	25 l drums and 5 l cans

Product Name	Recommended Coverage	Packaging
<b>MAXCLEAR® INJECTION CAT</b> Catalyst for activating of <b>MAXCLEAR® INJECTION</b> with substrates subject to high level of dampness.	33 % w/w injection resin	25 kg drums and 5 kg cans
<b>MAXCLEAR® INJECTION CREAM</b> Silane/siloxane injection paste of creamy consistency for treatment of concrete and masonry units subject to rising dampness.	113 ml/hole (1 m length)	600 ml bags

## 2.4 Rendering mortars and systems for thermal insulation

Product Name	Recommended Coverage	Packaging
<b>CONCRESEAL® TH</b> Polymer-modified, cement-based waterproofing and rendering mortar for façades composed of external thermal insulation panel system.	1,7 kg/m <sup>2</sup> ·mm	25 kg bags
<b>CONCRESEAL® TH -S</b> Polymer-modified, cement-based waterproofing and rendering mortar and priming for façades composed of external thermal insulation panel system.	1,6 kg/m <sup>2</sup> ·mm	25 kg bags
<b>CONCRESEAL® TOP -AC</b> Acrylic waterproofing and rendering mortar for decoration with rough texture on outdoor surfaces and façades composed of <b>CONCRESEAL® TH -S</b> and external thermal insulation panel system. Available in 3 different colours.	1,6 kg/m <sup>2</sup> ·mm	25 kg drums
<b>CONCRESEAL® TOP -S</b> Cement-based waterproofing and rendering mortar for decoration with rough texture on outdoor surfaces and façades composed of <b>CONCRESEAL® TH -S</b> and external thermal insulation panel system. Available in 3 different colours.	1,6 kg/m <sup>2</sup> ·mm	26 kg drums
<b>MAXMORTER® TH</b> Low thermal conductivity rendering mortar for thermal insulation of façades and indoor walls.	1,0-1,1 kg/m <sup>2</sup> ·mm	25 kg bags

## 2.5 Acrylic-based resin protection coatings for waterproofing, protection and decoration

Product Name	Recommended Coverage	Packaging
<b>MAXSHEEN®</b> Flexible, acrylic waterproof, protective and decorative coating with anticarbonation properties for outdoor/indoor surfaces, façades and masonry. Available in 16 different colours and two versions (smooth and textured).	Smooth: 0,4-0,6 kg/m <sup>2</sup> Textured: 0,6-0,8 kg/m <sup>2</sup>	25 kg and 5 kg drums
<b>MAXSHEEN® -F</b> Water-based silane and acrylic waterproof, protective and decorative coating for outdoor/indoor surfaces, façades and masonry.	0,5 - 0,6 kg/m <sup>2</sup>	25 kg drums
<b>MAXSHEEN® ELASTIC</b> High-performance, flexible, acrylic waterproof, protective and decorative coating with anticarbonation properties for outdoor/indoor surfaces, façades and masonry subject to movements. Available in 16 different colours and two versions (smooth and textured).	Smooth: 0,4-0,6 kg/m <sup>2</sup> Textured: 0,6-0,8 kg/m <sup>2</sup>	25 kg drums
<b>MAXSHEEN® PRIMER</b> Acrylic consolidating primer for <b>MAXSHEEN®</b> range applied on dusty and chalky surfaces.	0,1 - 0,2 kg/m <sup>2</sup>	25 l drums
<b>MAXSHEEN® POOL</b> Acrylic waterproof, protective and decorative coating with fungicide and bactericidal properties for swimming pools, ponds and fountains.	0,5-0,6 kg/m <sup>2</sup>	25 kg and 5 kg drums

## 2 PRODUCTS AND SYSTEMS FOR THE WATERPROOFING, DECORATION AND PROTECTION OF FAÇADES AND SURFACES

### 2.6 Water-repellent materials and transparent sealers for façades

Product	CE	Recommended Coverage	Packaging
<b>MAXCLEAR®</b> Solvent-based siloxane protective and penetrating sealer/water repellent/hydrophobic impregnation for concretes, mortars, traditional façades and masonry units.	CE	Low porosity: 0,2 - 0,35 l/m <sup>2</sup> High porosity: 1,5 - 2,0 l/m <sup>2</sup>	25 l drums
<b>MAXCLEAR® -D</b> Water-based silicone protective and penetrating sealer/water repellent/hydrophobic impregnation for concretes, mortars, traditional or limestone façades and masonry units.	CE	0,17 - 0,4 l/m <sup>2</sup>	25 l drums and 5 l jerry cans
<b>MAXCLEAR® TOP</b> Water-based silane/siloxane protective and penetrating sealer/water repellent/hydrophobic impregnation for concretes, mortars, traditional façades, recent applied single-layer mortars, and masonry units.	CE	0,25 - 1,0 l/m <sup>2</sup>	25 l drums
<b>MAXGLAZE®</b> Clear, water-based acrylic polymer waterproof and protective coating/impregnation for concretes, mortars, traditional façades and masonry units. satin appearance.	CE	0,17 - 0,5 l/m <sup>2</sup>	25 l drums and 5 l jerry cans
<b>MAXGLAZE® -D</b> Clear, solvent-based acrylic polymer waterproof and protective coating/impregnation for concretes, mortars, traditional façades and masonry units. Glossy appearance.	CE	0,17 - 0,5 l/m <sup>2</sup>	25 l drums and 5 l cans

### 2.7 Anti-salt treatment products for masonry and surfaces

Product	Recommended Coverage	Packaging
<b>MAXSEAL® SULFAT</b> Solvent-based anti-salt treatment penetrating liquid for concretes, mortars and masonry units.	0,4 - 0,5 l/m <sup>2</sup>	25 l drums and 5 l cans
<b>MAXCLEAR® SULFAT</b> Water-based anti-salt treatment penetrating liquid for concretes, mortars and masonry units.	0,4 - 0,5 l/m <sup>2</sup>	25 l drums

### 2.8 Consolidating product for masonry and others surfaces

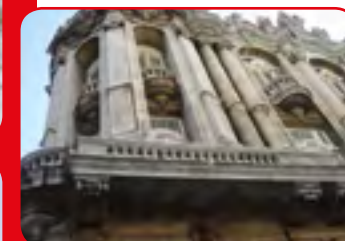
Product	Recommended Coverage	Packaging
<b>MAXCLEAR® CONSOLIDATED</b> Silica compound-based penetrating liquid for consolidation and hardening of natural stone, mineral substrates, concretes, mortars and masonry units.	0,5 - 15,0 l/m <sup>2</sup>	25 l drums and 5 l cans

### 2.9 Anti-graffiti system for façades and surfaces

Product	Recommended Coverage	Packaging
<b>MAXCLEAR® GRAFFITI</b> Antigrffiti and protective coating for porous building materials, concretes, mortars, traditional façades and masonry units.	0,35 - 0,5 l/m <sup>2</sup>	25 l drums and 5 l cans
<b>MAXCLEAN® ECOGEL</b> Environmental friendly removing and cleaning gel for synthetic paints.	0,2 - 0,3 kg/m <sup>2</sup>	25 kg and 5 kg jerry cans

## 3 Products and systems for the repair and surface restoration of concrete structures and for the corrosion protection

# 3





# 3 PRODUCTS AND SYSTEMS FOR THE REPAIR AND SURFACE RESTORATION OF CONCRETE STRUCTURES AND FOR THE CORROSION PROTECTION

## 3.1 Steel surfaces and reinforcing bar corrosion protection products and coatings

Product	Recommended Coverage	Packaging
<b>MAXREST® PASSIVE</b> One-component, water-based oxide-converter, anti-corrosive and protective solution for reinforcing bars and other iron or steel surfaces.	0,3 kg/m <sup>2</sup>	25 kg drums 5 kg and 1 kg jerry cans
<b>MAXRITE® PASSIVE</b> One-component, cement-based protective primer and bonding agent with corrosion inhibitors for reinforcing bars.	2,6 kg/m <sup>2</sup>	22 kg bags 10 kg drums
<b>MAXRITE® INHIBITOR</b> Liquid migrating corrosion inhibitor for protection of reinforcing bars on concrete structures.	0,5 kg/m <sup>2</sup>	25 kg drums

## 3.2 Levelling and cosmetic repair mortars in small thickness

Product	Recommended Coverage	Packaging
<b>CONCRESEAL® COSMETIC</b> Extra fine/smooth textured, levelling and cosmetic repair mortar for architectural concrete surfaces and mortars with a application thickness up to 3 mm. Available in grey and white colours.	0,5 kg/m <sup>2</sup> ·mm	22 kg bags
<b>CONCRESEAL® -3</b> One-component, polymer-modified cement-based levelling and repair mortar with smooth texture for cosmetic restoration of mortars and architectural concrete surfaces with application thickness up to 3 mm. Class R2. Available in grey and white colours.	1,5 kg/m <sup>2</sup> ·mm	25 kg bags
<b>CONCRESEAL® -5</b> One-component, polymer-modified cement-based levelling and repair mortar with very smooth texture for cosmetic restoration of mortars and architectural concrete surfaces with application thickness up to 5 mm. Class R2. Available in grey and white colours.	1,5 kg/m <sup>2</sup> ·mm	25 kg bags
<b>MAXEPOX® CEM</b> High-performance, three-component, water-epoxy and cement-based protective, levelling and repair mortar for concrete surfaces with application thickness up to 5 mm.	1,95 kg/m <sup>2</sup> ·mm	20 kg pre-weighed sets

## 3.3 Thixotropic cement-based structural repair mortars

Product	Recommended Coverage	Packaging
<b>MAXREST®</b> Non-shrink, thixotropic, fast-setting, cement-based structural repair mortar for concrete and masonry. Class R4. Available in antislulphate version	1,7 kg/m <sup>2</sup> ·mm	25 kg bags 25 kg and 5 kg cans
<b>MAXREST® -E</b> Non-shrink, thixotropic, fast-setting, cement-based structural repair mortar for concrete and masonry. Class R3. Available in antislulphate version.	1,7 kg/m <sup>2</sup> ·mm	25 kg bags
<b>MAXRITE® -F</b> Non-shrink, thixotropic, normal-setting, microsilica-enhanced, polymer-modified, fiber-reinforced, cement-based structural repair mortar for concrete and masonry and suitable for spraying means. Class R4. Available in antislulphate version.	1,9 kg/m <sup>2</sup> ·mm	25 kg bags
<b>MAXRITE® 500</b> Non-shrink, thixotropic, fast-setting, polymer-modified, fiber-reinforced cement-based structural repair mortar with corrosion inhibitors for concrete and masonry. Class R4. Available in antislulphate version.	1,85 kg/m <sup>2</sup> ·mm	25 kg bags and 25 kg cans
<b>MAXRITE® 700</b> Non-shrink, thixotropic, normal-setting, polymer-modified, fiber-reinforced cement-based structural repair mortar with corrosion inhibitors for concrete and masonry and suitable for spraying means. Class R4. Available in antislulphate version.	1,85 kg/m <sup>2</sup> ·mm	25 kg bags and 25 kg cans

# 3 PRODUCTS AND SYSTEMS FOR THE REPAIR AND SURFACE RESTORATION OF CONCRETE STRUCTURES AND FOR THE CORROSION PROTECTION

Product	Recommended Coverage	Packaging
<b>MAXRITE® -S</b> Non-shrink, thixotropic, long-setting, cement-based structural repair mortar for concrete and masonry and suitable for spraying means. Class R4. Available in antislulphate version.	1,7 kg/m <sup>2</sup> ·mm	25 kg bags
<b>MAXRITE® -HT</b> Non-shrink, thixotropic, normal-setting, polymer-modified, fiber-reinforced cement-based structural repair mortar with corrosion inhibitors for concrete and masonry (application thickness up to 10 cm) and suitable for spraying means. Class R3. Available in antislulphate version.	1,85 kg/m <sup>2</sup> ·mm	25 kg bags
<b>MAXRITE® -R</b> Non-shrink, thixotropic, normal-setting, polymer-modified, cement-based structural repair mortar for concrete and masonry. Class R3.	1,8 kg/m <sup>2</sup> ·mm	25 kg bags
<b>MAXRITE® CATHODIC</b> Non-shrink, thixotropic, normal-setting, polymer-modified, cement-based structural repair mortar for concrete and masonry.	1,8 kg/m <sup>2</sup> ·mm	25 kg bags

## 3.4 Fluid cement-based structural repair mortars

Product	Recommended Coverage	Packaging
<b>MAXGROUT®</b> Non-shrink, high-strength, normal-setting, cement-based high fluidity grout/structural repair mortar for concrete and also suitable for filling and anchoring. Class R4. Available in antislulphate version.	2,0 kg/m <sup>2</sup> ·mm	25 kg bags
<b>MAXGROUT® -HR</b> Non-shrink, high-strength, fast-setting, cement-based high fluidity grout/structural repair mortar for concrete and also suitable for filling and anchoring. Class R4. Available in antislulphate version.	2,0 kg/m <sup>2</sup> ·mm	25 kg bags
<b>MAXGROUT® INJECTION</b> High fluidity, one-component, cement-based consolidating and filling injection mortar for brick/stone masonry and walls.	1,33 kg/l	20 kg bags
<b>MAXRITE® INJECTION</b> Non-shrink, high-strength, normal-setting, polymer-modified, cement-based high fluidity structural repair mortar with corrosion inhibitors for concrete and also suitable for filling and anchoring. Class R4. Available in antislulphate version.	2,0 kg/m <sup>2</sup> ·mm	25 kg bags
<b>MAXRITE® FLOOR</b> Non-shrink, fluid, normal-setting, polymer-modified, metal/polypropylene fiber-reinforced, cement-based strengthening and structural repair mortar for concrete slabs.	2,2 kg/m <sup>2</sup> ·mm	25 kg bags

## 3.5 Epoxy-based structural repair mortar

Product	Recommended Coverage	Packaging
<b>MAXEPOX® FIX</b> High strength, fluid, solvent-free, epoxy structural repair mortar suitable filling and anchoring.	1,9 kg/l	32,5 kg pre-weighed sets
<b>MAXEPOX® REPAIR</b> High strength, thixotropic, solvent-free, epoxy repair mortar for horizontal surfaces. Application thickness from 5 to 50 mm.	2,0-2,1 kg/m <sup>2</sup> ·mm	35 kg pre-weighed sets
<b>MAXEPOX® REPAIR -V</b> High strength, thixotropic, solvent-free, epoxy repair mortar for vertical surfaces. Application thickness from 5 to 30 mm.	1,8-2,0 kg/m <sup>2</sup> ·mm	4 kg and 8 kg pre-weighed sets

# 3 PRODUCTS AND SYSTEMS FOR THE REPAIR AND SURFACE RESTORATION OF CONCRETE STRUCTURES AND FOR THE CORROSION PROTECTION

## 3.6 Carbon fiber strengthening system

### DRIZORO® WRAP



Recommended Coverage

Packaging

Carbon-fiber fabric strengthening system for concrete structures. Available in four different types to suit the needs of use: **DRIZORO® WRAP 220**, **DRIZORO® WRAP 300**, **DRIZORO® WRAP 600** and **DRIZORO® WRAP HM** (high modulus type). Epoxy resins for strengthening system: **MAXPRIMER® -C**, **MAXEPOX® -CS** and **MAXEPOX® -CP**; available in high (-S) and low temperature versions (-W).

Consult Technical Information

Consult Technical Information

### DRIZORO® COMPOSITE



Carbon-fiber, pre-formed laminate strengthening system for concrete structures. Available in different widths (5, 8, 10 and 12 cm) to suit the needs of use: **DRIZORO® COMPOSITE 1405**, **DRIZORO® COMPOSITE 1408** and **DRIZORO® COMPOSITE 1410 / 1412**. Epoxy resin for strengthening system: **MAXEPOX® CARBOFIX**.

Consult Technical Information

25 m length rolls

### DRIZORO® CARBOMESH

Two orthogonal direction-arranged, carbon-fiber fabric strengthening system for concrete structures. Available in three different types to suit the needs of use: **DRIZORO® CARBOMESH 160**, **DRIZORO® CARBOMESH 210** and **DRIZORO® CARBOMESH 300**. Epoxy resin for strengthening system: **MAXEPOX® CARBOFIX**, or cement-based mortar for strengthening system: **CONCRESEAL® CARBOFIX**.

Consult Technical Information

Consult Technical Information

### DRIZORO® CARBOROD

Epoxy-embedded unidirectional carbon-fiber, pre-formed rods for repair and strengthening of concrete structures and masonry units. Available in 3 different diameters (8, 10 and 12 mm): **DRIZORO® CARBOROD 308**, **DRIZORO® CARBOROD 310** and **DRIZORO® CARBOROD 312**. Epoxy resin for system: **MAXEPOX® CARBOFIX**.

Consult Technical Information

Consult Technical Information

### DRIZORO® WRAP CONNECT

Unidirectional, high strength carbon fiber connector for structural strengthening of concrete by FRP Systems, i.e. **DRIZORO® WRAP** and **DRIZORO® CARBOMESH**. Available in four different diameters: 6, 8, 10, and 12 mm.

Consult Technical Information

10 m length rolls

### DRIZORO® CARBO CONNECT

Pre-formed, unidirectional, high strength carbon fiber connector for structural strengthening of concrete by FRP systems, i.e. **DRIZORO® WRAP** and **DRIZORO® CARBOMESH**. Available in two types (single-wire or double-wire connection), and four different diameters: 6, 8, 10, and 12 mm.

Consult Technical Information

Consult Technical Information

## Products and systems for special applications



## 4.1 Anchoring and fixing cement-based products and systems for reinforcing bars and other elements

Product	Recommended Coverage	Packaging
<b>MAXGRIP®</b> Quick-setting, one-component, pourable, non-shrink, cement-based anchoring mortar with high fluidity suitable for small elements on concrete horizontal surfaces.	2,0 kg/l	25 kg drums
<b>MAXBETON®</b> Fast-setting, one-component, thixotropic, non-shrink, cement-based anchoring and fixing mortar for construction elements.	1,8 kg/l	25 kg bags
<b>WATMAT®</b> <span style="float: right;">CE</span> Fast-setting, one-component, thixotropic, non-shrink, cement-based anchoring and fixing mortar for manhole covers and construction elements. Available in summer (-S) and winter (-W) versions.	1,7 kg/l	25 kg drums and 25 kg bags
<b>WATMAT® FLUID</b> <span style="float: right;">CE</span> Fast-setting, one-component, non-shrink, cement-based levelling and fixing fluid mortar for manhole covers and construction elements. Available in summer (-S) and winter (-W) versions.	1,8 kg/l	25 kg bags
<b>WATMAT® FIX</b> Fast-setting, one-component, thixotropic, cement-based fixing mortar for elements on concrete and asphalt.	2,0 kg/l	25 kg bags

## 4.2 Resins-based anchoring cartridges

Product	Recommended Coverage	Packaging
<b>MAXFIX® -E</b> Two-component, epoxy-based fastening, anchoring and bonding cartridge system with long open time for threaded rods and reinforcing bars into concrete and solid masonry.	Depending on depth and length of hole	600 ml two-part type cartridges
<b>MAXFIX® -ER</b> <span style="float: right;">CE</span> Two-component, epoxy-based fastening, anchoring and bonding cartridge system with long open time for threaded rods and reinforcing bars into concrete and solid masonry.	Depending on depth and length of hole	650 ml two-part type cartridges

Product	Recommended Coverage	Packaging
<b>MAXFIX® -P</b> <span style="float: right;">CE</span> Two-component, polyester-based fastening, anchoring and bonding cartridge system for threaded rods and reinforcing bars into concrete and solid or hollow masonry.	Depending on depth and length of hole	410 ml two-part type cartridges
<b>MAXFIX® -V</b> Two-component, vinyl & ester-based fastening, anchoring and bonding cartridge system for threaded rods and reinforcing bars into concrete and solid or hollow masonry.	Depending on depth and length of hole	410 ml two-part type cartridges

## 4.3 Products and systems for the restoration of wood structures and stone ornamental elements

Product	Recommended Coverage	Packaging
<b>MAXEPOX® -W</b> High performance, fluid, solvent-free, two-component, epoxy binder for restoration and consolidation of wood structures.	1,1 kg/l pure resin 0,35 kg mortar/l (Binder: Aggregate= 1:5)	5 kg pre-weighed set
<b>MAXSTONE®</b> Two-component, lightweight, mouldable, restoration and repair mortar for ornamental or natural stone elements.	0,83 kg/m <sup>2</sup> -mm	17 kg pre-weighed sets

## 4.4 Special mortar with admixtures for masonry units

Product	Recommended Coverage	Packaging
<b>MAXMORTER® -F</b> Modified cement for mixing of fast-setting and multi-purpose mortars.	Depending on use	20 kg bags

## 4.5 Expansive mortar for demolition

Product	Recommended Coverage	Packaging
<b>MAXDINAMIT® CEMENT</b> Highly expansive hydraulic mortar for safe demolition without explosives. Available in summer (-S) and winter (-W) versions.	Depending on element to be demolished	15 kg drums

# 4 PRODUCTS AND SYSTEMS FOR SPECIAL APPLICATIONS

## 4.6 Cement-based refractory mortars

### MAXMORTER® HEAT 750



Recommended Coverage

Packaging

Refractory mortar for laying bricks and coating subject to high temperatures suitable up to 750°C.

1,7 kg/m<sup>2</sup>·mm

25 kg bags

### MAXMORTER® HEAT 1100



1,7 kg/m<sup>2</sup>·mm

25 kg bags

Refractory mortar for laying bricks and coating subject to high temperatures suitable up to 1.100°C.

### MAXMORTER® HEAT 1600



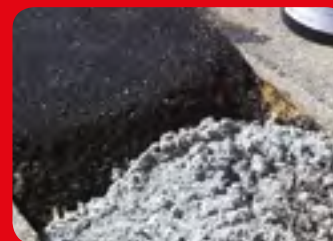
1,87 kg/m<sup>2</sup>·mm

25 kg bags

Refractory mortar for laying bricks and coating subject to high temperatures suitable up to 1.600°C.

## Products and systems for the repair, screed and levelling of flooring

# 5



## 5.1 Cement-based patching mortars

Product	CE	Recommended Coverage	Packaging
<b>MAXPATCH®</b> Normal setting-time, two-component, cement-based patching mortar for application thickness from 5 to 25 mm. Available Smoot (Fino) / Extra-smooth (Extra Fino) versions. Available colour chart and pigments for coloured versions: <b>MAXPATCH® DECOR</b> .		2,0 kg/m <sup>2</sup> ·mm	30 kg pre-weighed sets
<b>MAXPATCH® -M</b> Normal-setting-time, one-component, cement-based patching mortar for application thickness from 5 to 25 mm. Available Smoot (Fino) / Extra-smooth (Extra Fino) versions. Available colour chart and pigments for coloured versions: <b>MAXPATCH® DECOR</b> .		2,0 kg/m <sup>2</sup> ·mm	25 kg bags
<b>MAXROAD®</b> Very fast-setting time (15 minutes), one-component, cement-based patching mortar for application thickness from 30 to 50 mm. Placing into service 2 h.		2,0 kg/m <sup>2</sup> ·mm	25 kg bags and 25 kg drums
<b>MAXROAD® EXPRESS</b> Very fast-setting time (45-60 minutes), one-component, cement-based patching mortar for application thickness from 30 to 50 mm or large volumens. Placing into service 2 h.		2,0 kg/m <sup>2</sup> ·mm	25 kg bags and 25 kg drums

## 5.2 Methyl methacrylate-based patching mortar for very urgent repair

Product	CE	Recommended Coverage	Packaging
<b>MAXPATCH® MC</b> Very fast-setting, two-component, methyl-methacrylate patching mortar for application thickness from 5 mm, and low temperature use. Available in summer ( <b>MC-S</b> ) and winter ( <b>MC-W</b> ) versions.		Depending on use	20 kg pre-weighed sets

## 5.3 Cold-asphalt patching product for asphalt pavements

Product	CE	Recommended Coverage	Packaging
<b>MAXPATCH® ASPHALT</b> Ready to use, resin-modify cold asphalt repair and patching product for asphalt pavements.		1,7 kg/m <sup>2</sup> ·mm	25 kg drums

## 5.4 Cement-based self-levelling mortars

Product	CE	Recommended Coverage	Packaging
<b>MAXFLOW®</b> High performance, two-component, fiber-reinforced, polymer-modified cement-based self-levelling mortar for indoor/outdoor wearing surfaces (3 to 8 mm thick). Available in grey, pearl grey, red and green colours.		1,8 kg/m <sup>2</sup> ·mm	120 kg and 30 kg pre-weighed sets
<b>MAXFLOW® 500</b> High-performance, one-component, fiber-reinforced, polymer-modified cement-based self-levelling mortar for indoor/outdoor wearing surfaces (3 to 8 mm thick). Available in grey, pearl grey, red and green colours.		1,7 kg/m <sup>2</sup> ·mm	25 kg bags
<b>MAXLEVEL®</b> One-component, polymer-modified cement-based, self-levelling mortar and underlayment for indoor applications (3 to 5 mm thick). Available in summer ( <b>-S</b> ) and winter ( <b>-W</b> ) version.		1,6 kg/m <sup>2</sup> ·mm	25 kg bags
<b>MAXLEVEL® SUPER</b> Fast-setting, one-component, polymer-modified cement-based, self-levelling mortar and underlayment for indoor wearing surfaces (3 to 15 mm thick). Available in summer ( <b>-S</b> ) and winter ( <b>-W</b> ) versions.		1,6 kg/m <sup>2</sup> ·mm	25 kg bags
<b>MAXLEVEL® 30</b> Fast-setting, one-component, polymer-modified cement-based, self-levelling mortar and underlayment for indoor applications (8 to 30 mm thick). Available in summer ( <b>-S</b> ) and winter ( <b>-W</b> ) versions.		1,7 kg/m <sup>2</sup> ·mm	25 kg bags
<b>MAXLEVEL® SILENT</b> One-component, polymer-modified cement-based, sound isolation and impact sound reducing self-levelling mortar and underlayment for indoor applications (5 to 15 mm thick).		1,0 kg/m <sup>2</sup> ·mm	15 kg bags
<b>MAXFLOOR® CEM</b> Three-component, cement and epoxy-based, self-levelling mortar and underlayment for indoor applications (1,5 to 3 mm thick). Available in grey and white colours.		2,25 kg/m <sup>2</sup> ·mm	30,8 kg pre-weighed sets

# 5 PRODUCTS AND SYSTEMS FOR THE REPAIR, SCREED AND LEVELLING OF FLOORING

## 5.5 Cement-based screeds and flooring mortars

### MAXFLOOR® MARINE

High flexibility, two-component, polymer-modified cement-based mortar with high adhesion on metal surfaces.

Recommended Coverage	Packaging
2,0 kg/m <sup>2</sup> ·mm	28,5 kg pre-weighed sets

### MAXMORTER® FLOOR

Fast-setting, polymer-modified hydraulic binder for screeds and flooring repair mortars suitable for indoor and big thickness (up to 4 cm) applications.

Recommended Coverage	Packaging
450 kg/m <sup>3</sup>	20 kg bags

### MAXMORTER® FLOOR -10

Fast-setting, polymer-modified hydraulic binder for screeds and flooring repair mortars suitable for indoor and big thickness (up to 10 cm) applications.

Recommended Coverage	Packaging
450 kg/m <sup>3</sup>	20 kg bags

## 5.6 Polyurethane-based binder for stone carpet

### MAXURETHANE® PAV

Transparent, one-component, solvent-free and 100% solid, aliphatic polyurethane binder for stone carpet and draining pavements.

Recommended Coverage	Packaging
2-6 % (w/w aggregate)	25 kg drums

## 5.7 Acrylic priming for cement-based flooring systems

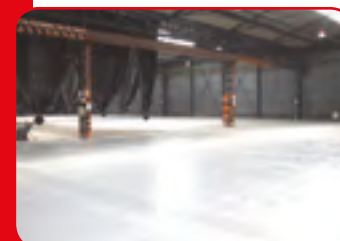
### MAXPRIMER® FLOOR

One-component, water-based acrylic primer suitable for cement-based flooring systems applied on concrete surfaces.

Recommended Coverage	Packaging
0,15-0,2 kg/m <sup>2</sup>	25 l and 5 l jerry cans

# 6 Products and systems for the protection and finishing of surfaces and flooring

# 6



# 6 PRODUCTS AND SYSTEMS FOR THE PROTECTION AND FINISHING OF SURFACES AND FLOORING

## 6.1 Polyurethane-based resin coatings and flooring systems

Product Name	Recommended Coverage	Packaging
<b>MAXURETHANE®</b> Transparent, one-component, solvent-based aromatic polyurethane protective and decorative coating highly resistant to chemicals and abrasion suitable for indoor applications.	0,2-0,3 kg/m <sup>2</sup>	25 kg drums and 5 kg cans
<b>MAXURETHANE® DECOR</b> Colouring admixture for <b>MAXURETHANE</b> coating. Available in 8 different colours.	-----	Depending on colour: 0,5 to 4,5 kg pre-weighed sets
<b>MAXURETHANE® TOP</b> Transparent, one-component, solvent-based aliphatic polyurethane protective and decorative coating weathering resistant suitable for both indoor and outdoor applications. Available in satin and glossy versions.	0,4-0,5 kg/m <sup>2</sup>	25 kg drums
<b>MAXURETHANE® 2C</b> Transparent/Coloured, two-component, flexible, solvent-based aliphatic polyurethane protective and decorative coating weathering resistant for both indoor and outdoor applications. Available in satin and glossy versions, and 4 different colours.	0,4-0,5 kg/m <sup>2</sup>	10 kg, 5 kg and 1 kg pre-weighed sets
<b>MAXURETHANE® 2C-W</b> Transparent/Coloured, two-component, water-based aliphatic polyurethane protective and decorative coating weathering resistant suitable for both indoor and outdoor applications. Available in satin and glossy versions.	0,3-0,5 kg/m <sup>2</sup>	22,35 kg and 5 kg pre-weighed sets
<b>MAXURETHANE® FLOOR</b> High-performance, 100% solid, solvent-free two-component aliphatic polyurethane-based system for coatings, slip resistance (multi-layered) flooring systems, fluid mortars and trowelable mortars. Suitable for food contact. Available in 4 different colours.	0,5-0,6/ 1,0-1,2 kg m <sup>2</sup> 0,8/0,4 kg/ m <sup>2</sup> -mm	25 kg pre-weighed sets
<b>MAXURETHANE® PRIMER</b> Two-component, solvent-free, polyurethane-based primer suitable for epoxy or polyurethane systems applied on concrete surfaces.	0,25-0,30 kg/m <sup>2</sup>	25 kg and 10 kg pre-weighed sets

## 6.2 Epoxy-based resin coatings and flooring systems

Product Name	Recommended Coverage	Packaging
<b>MAXFLOOR®</b> Water-based epoxy protective and decorative coating for horizontal surfaces. Available in transparent and 3 different colours, and satin/glossy versions.	0,4-0,6 kg/m <sup>2</sup>	20 kg and 10 kg pre-weighed sets
<b>MAXEPOX® MORTER -V</b> Water-based epoxy protective and decorative coating for both vertical and horizontal surfaces. Available in transparent and 3 different colours, and satin/glossy versions.	0,4-0,6 kg/m <sup>2</sup>	20 kg and 10 kg pre-weighed sets
<b>MAXEPOX® FLOOR</b> High performance, 100% solid and solvent-free, two-component epoxy system for coatings, slip resistance (multi-layered) flooring systems, fluid mortars and trowelable mortars. Available in transparent and 3 different colours.	0,5-1,0/ 1,0-1,2 kg/m <sup>2</sup> 1,0-1,2/0,5-0,6 kg/m <sup>2</sup> -mm	25 kg pre-weighed sets
<b>MAXEPOX® FLOOR -M</b> Two-component, 100% solid, solvent-free epoxy binder for priming, coatings, slip resistance (multi-layered) flooring systems and trowelable mortars. Available only in transparent version.	0,2-1,2 kg/m <sup>2</sup> Depending on uses	300 kg pre-weighed sets
<b>MAXEPOX® 3000</b> High-performance, three-component, 100% solid, solvent-free epoxy-based self-levelling mortar (up to 3 mm thick). Available in 3 different colours.	1,7 kg/m <sup>2</sup> -mm	30 kg pre-weighed sets

# 6 PRODUCTS AND SYSTEMS FOR THE PROTECTION AND FINISHING OF SURFACES AND FLOORING

Product Name	Recommended Coverage	Packaging
<b>MAXEPOX DECOR®</b> High performance, varnish flooring system for finishing and decoration of horizontal surfaces. Available in 6 different colours.	0,5 kg/m <sup>2</sup>	5 kg pre-weighed sets
<b>MAXEPOX® MORTER</b> High performance, 100% solid and solvent-free, two-component epoxy binder for trowelable mortars (4-5 mm thick), and multi-layered flooring systems. Available in transparent and 3 different colours.	0,5-0,6 kg/m <sup>2</sup> 0,25-0,3 kg/ m <sup>2</sup> -mm	25 kg and 10 kg pre-weighed sets
<b>MAXEPOX® MORTER 10</b> High performance, 100% solid and solvent-free, two-component epoxy binder for trowelable mortars (4-20 mm thick). Available in transparent and grey colour.	0,2 kg/m <sup>2</sup> -mm	25 kg and 10 kg pre-weighed sets

## 6.3 Priming for resin-based flooring systems

Product Name	Recommended Coverage	Packaging
<b>MAXPRIMER®</b> Two-component, solvent-based epoxy primer for <b>DRIZORO®</b> epoxy flooring systems on concrete surfaces.	0,2-0,3 kg/m <sup>2</sup>	25 kg and 10 kg pre-weighed sets
<b>MAXPRIMER® WET</b> Two-component, 100 % solid, solvent-free epoxy primer for <b>DRIZORO®</b> epoxy flooring systems suitable for concrete surfaces with high degree of humidity.	0,6 kg/m <sup>2</sup>	15 kg pre-weighed sets
<b>MAXEPOX® PRIMER</b> Two-component, 100 % solid, solvent-free epoxy primer for <b>DRIZORO®</b> epoxy flooring systems on concrete surfaces.	0,25-0,5 kg/m <sup>2</sup>	20 kg and 10 kg pre-weighed sets
<b>MAXEPOX® ELASTIC</b> Two-component, 100 % solid, solvent-free, elastomeric epoxy resin suitable for priming, sealing of joints and fissures, and elastic flooring systems.	0,4-1,0 kg/m <sup>2</sup> Depending on uses	20 kg pre-weighed sets
<b>MAXEPOX® AC</b> Two-component, water-based epoxy primer and coating with corrosion inhibitors for protection of metal surfaces.	0,25 kg/m <sup>2</sup>	10 kg pre-weighed sets

## 6.4 Polyurethane & cement based flooring system

Product Name	Recommended Coverage	Packaging
<b>MAXURETHANE® CEM PRIMER</b> Three-component, cement and polyurethane-based primer for <b>MAXURETHANE® CEM</b> flooring system	1,5-2,0 kg/m <sup>2</sup>	41,3 kg pre-weighed sets
<b>MAXURETHANE® CEM -C</b> High-performance, cement and polyurethane based-mortar for corners and out-standing points for <b>MAXURETHANE® CEM</b> flooring system. Available in 4 different colours.	1,95 kg/m <sup>2</sup> -mm	30,92 kg pre-weighed sets
<b>MAXURETHANE® CEM -V</b> High-performance, cement and polyurethane based-mortar for vertical surfaces (3-10 mm thick) for <b>MAXURETHANE® CEM</b> flooring system. Available in 4 different colours.	2,0 kg/m <sup>2</sup> -mm	30,99 kg pre-weighed sets
<b>MAXURETHANE® CEM -L</b> High-performance, cement and polyurethane based-mortar for horizontal surfaces (4-6 mm thick) with smooth texture for <b>MAXURETHANE® CEM</b> flooring system. Available in 4 different colours	2,0 kg/m <sup>2</sup> -mm	35,70 kg pre-weighed sets
<b>MAXURETHANE® CEM -F</b> High-performance, cement and polyurethane based-mortar for horizontal surfaces (4-15 mm thick) with rough texture for <b>MAXURETHANE® CEM</b> flooring system. Available in 4 different colours.	2,0 kg/m <sup>2</sup> -mm	31,44 kg pre-weighed sets

# 6 PRODUCTS AND SYSTEMS FOR THE PROTECTION AND FINISHING OF SURFACES AND FLOORING

## 6.5 Polyurea resin-based flooring system

### MAXFLOOR® POLY

High-performance, cold-applied, two-component, solvent-free aliphatic polyurea resin with very fast putting into service for outdoor coatings, slip resistance (multi-layered) flooring systems and fluid mortars. Available in transparent and 3 different colours.

Recommended Coverage	Packaging
0,5-0,7 kg/m <sup>2</sup> 1,0 kg/m <sup>2</sup> ·mm	10 kg pre-weighed sets

### MAXFLOOR® POLY -M

High-performance, cold-applied, two-component, solvent-free aromatic polyurea resin with very fast putting into service for indoor coatings, slip resistance (multi-layered) flooring systems and fluid mortars. Available in transparent and 7 different colours.

Recommended Coverage	Packaging
0,5-0,7 kg/m <sup>2</sup> 1,0 kg/m <sup>2</sup> ·mm	20 kg pre-weighed sets

## 6.6 Methyl methacrylate resin-based flooring system

### MAXFLOOR® MMA -P

Transparent, methyl-methacrylate reactive resin with low viscosity and fast curing for low temperature priming of concrete and mortar surfaces of **MAXFLOOR® MMA** system.

Recommended Coverage	Packaging
0,3-0,5 kg/m <sup>2</sup>	20 kg drums

### MAXFLOOR® MMA -PW

Transparent, methyl-methacrylate reactive resin with low viscosity and fast curing for low temperature priming of wet concrete and mortar surfaces of **MAXFLOOR® MMA** system.

Recommended Coverage	Packaging
0,3-0,5 kg/m <sup>2</sup>	20 kg drums

### MAXFLOOR® MMA -B

Transparent, methyl-methacrylate reactive resin with medium viscosity and fast curing for bases/screeds of **MAXFLOOR® MMA** system.

Recommended Coverage	Packaging
1,0-1,2 kg/m <sup>2</sup> 0,8 kg/m <sup>2</sup> ·mm	20 kg drums

### MAXFLOOR® MMA -BD

Transparent, vibration-resistant and flexible methyl-methacrylate reactive resin with medium viscosity and fast curing for bases/screeds of **MAXFLOOR® MMA** system.

Recommended Coverage	Packaging
1,0-1,2 kg/m <sup>2</sup> 0,8 kg/m <sup>2</sup> ·mm	20 kg drums

### MAXFLOOR® MMA -F

Transparent, methyl-methacrylate reactive resin with low viscosity and fast curing for finishing and sealing of **MAXFLOOR® MMA** system with high mechanical performance.

Recommended Coverage	Packaging
0,25-0,3 kg/m <sup>2</sup>	20 kg drums

### MAXFLOOR® MMA -FH

Transparent, methyl-methacrylate reactive resin with low viscosity and fast curing for finishing and sealing of **MAXFLOOR® MMA** system with high mechanical performance and resistance to high temperature cleaning methods.

Recommended Coverage	Packaging
0,25-0,3 kg/m <sup>3</sup>	20 kg drums

### MAXFLOOR® MMA CAT

Catalyst for reaction control of reactive resins of **MAXFLOOR® MMA** system.

Recommended Coverage	Packaging
Depending on use	5 kg drums

### MAXFLOOR® MMA CAT -R

Catalyst for reaction control of reactive resins of **MAXFLOOR® MMA** system suitable for temperatures below 0°C.

Recommended Coverage	Packaging
Depending on use	5 kg drums

### PIGMENTS (MAXFLOOR MMA)

Pigment suitable for reactive resins of **MAXFLOOR® MMA** system. Available in 5 different colours.

Recommended Coverage	Packaging
-----	25 kg and 5 kg drums

## 6.7 Resin-based sport flooring system

### MAXFLOOR® SPORT

One-component, water-based acrylic, anti-dust, protective and decorative coating for indoor and outdoor pavements. Available in transparent and 4 different colours.

Recommended Coverage	Packaging
0,5-0,6 kg/m <sup>2</sup>	25 kg drums

### MAXFLOOR® SPORT -PA

One-component, synthetic resin-based mortar formulated with mineral filler suitable for bonding layer in sport flooring systems. Available in 6 different colours and two different granulometry: **PA10** (1,0 mm), and **PA6** (0,6 mm).

Recommended Coverage	Packaging
1,0-1,2 kg/m <sup>2</sup>	25 kg drums

# 6 PRODUCTS AND SYSTEMS FOR THE PROTECTION AND FINISHING OF SURFACES AND FLOORING

## MAXFLOOR® SPORT -FA

One-component, water-based acrylic protective and decorative coating formulated with micronized filler for sealing of sport flooring systems, concrete areas and asphalt surfaces. Available in 7 different colours.

Recommended Coverage	Packaging
0,2 kg/m <sup>3</sup>	25 kg drums

## 6.8 High conductivity flooring systems

### MAXEPOX® PRIMER -AC

Two-component, 100 % solid, solvent-free, graphite-based epoxy conductive primer for high conductivity flooring systems.

Recommended Coverage	Packaging
0,15-0,2 kg/m <sup>2</sup>	12 kg pre-weighed sets

### MAXEPOX® FLOOR -AC

High conductivity, 100% solid, solvent-free, two-component self-leveling epoxy flooring system with very smooth finish.

Recommended Coverage	Packaging
1,0-1,2 kg/m <sup>2</sup>	12 kg pre-weighed sets

### MAXURETHANE® -AC

High conductivity, water-based aliphatic polyurethane protective coating with high abrasion resistance.

Recommended Coverage	Packaging
0,4 kg/m <sup>3</sup>	12 kg pre-weighed sets

## 6.9 Cement-based surface hardeners

### MAXDUR®

Coloured, silica aggregates and cement-based surface hardener/sealer/dust proofer for green concrete applied by dry shake method. Available in three different colours.

Recommended Coverage	Packaging
4,0-6,0 kg/m <sup>2</sup>	25 kg bags

### MAXDUR® -C

Coloured, silica aggregates and corundum/cement-based surface hardener/sealer/dust proofer for green concrete applied by dry shake method. Available in three different colours.

Recommended Coverage	Packaging
4,0-6,0 kg/m <sup>2</sup>	25 kg bags

## 6.10 Transparent liquid surface hardeners

### MAXCLEAR® HARDENER

Liquid applied, surface hardener/sealer/dust proofer for protection and finishing of concrete surfaces and cement-based mortars.

Recommended Coverage	Packaging
0,3-0,6 kg/m <sup>2</sup>	25 kg jerry cans

### MAXCLEAR® HARDENER LITHIUM

Liquid applied, lithium silicate-based surface hardener/sealer/dust proofer for protection and finishing of concrete surfaces and cement-based mortars.

Recommended Coverage	Packaging
0,1-0,2 l/m <sup>2</sup>	25 l jerry cans 200 drums

### MAXCLEAR® HARDENER LITHIUM -F

Liquid applied, lithium silicate-based surface hardener/sealer/dust proofer with glossy finish for protection and finishing of concrete and cement-based mortars.

Recommended Coverage	Packaging
0,1-0,2 l/m <sup>2</sup>	25 l jerry cans 200 drums

## 6.11 Cement-based grouting mortar for asphalt pavements

### MAXSEAL® ASPHALT

One-component, polymer-modified cement-based grout with high fluidity for filling of porous asphalt layers.

Recommended Coverage	Packaging
1,3-1,6 kg/m <sup>2</sup> ·cm	25 kg bags

## 6.12 Acrylic-based binder for consolidation and dust control

### MAXCLEAR® PAV

Water-based acrylic resin binder for consolidation, dust control and soil stabilization.

Recommended Coverage	Packaging
0,8-1,2 l/m <sup>2</sup>	25 l jerry cans



# 6 PRODUCTS AND SYSTEMS FOR THE PROTECTION AND FINISHING OF SURFACES AND FLOORING

## 6.13 Aggregates and others auxiliary products for flooring

### MAXFLOOR® FILLER

Well-graded, clean and dry silica sand with very low granulometry for mixing of fluid resin-based mortars or slip resistant (multi-layered) flooring systems.

Recommended Coverage
Depending on use

Packaging
20 kg bags

### DRIZORO® SILICA DECOR

Natural, coloured, well-grade clean and dry aggregate for mixing of decorative resin-based mortars or slip resistant (multi-layered) flooring systems. Available in 6 different colours.

Depending on use
------------------

28 kg bags
------------

### MAXEPOX® COLOR

Coloured, well-grade clean and dry silica sand with granulometry from 0,5 to 1 mm for mixing of decorative resin-based mortars or slip resistant (multi-layered) flooring systems. Available in 8 different colours

Depending on use
------------------

25 kg bags
------------

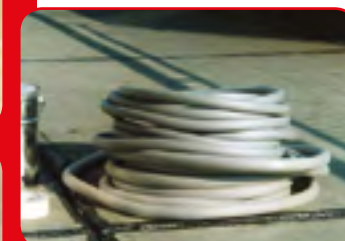
### BISEAL® MEV

Hollow microspheres for slip resistant (multi-layered) flooring systems. Available in 4 different diameters: **MEV 0102**, **MEV 0203**, **MEV 0304**, and **MEV 0408**.

Depending on use
------------------

25 kg bags
------------

## Products and systems for the sealing of joints



## 7.1 Backing rods

### MAXCEL®



Recommended Coverage

Packaging

Polyethylene foam backing rods suitable for **MAXFLEX®** range sealants. Available in 8 different sizes.

Coils

## 7.2 Polyurethane-based elastomeric sealants and primer

### MAXFLEX® 100 HM



Recommended Coverage

Packaging

High modulus, one-component, polyurethane elastomeric sealant/adhesive.

100 ml/m per 10x10 mm joint

600 ml bags

### MAXFLEX® 100 LM



Low modulus, one-component, polyurethane elastomeric sealant.

100 ml/m per 10x10 mm joint

600 ml bags and 300 ml cartridges

### MAXFLEX® 100 W



Low modulus, one-component, polyurethane elastomeric sealant for permanent immersion conditions and weathering resistant. Suitable for drinking water.

100 ml/m per 10x10 mm joint

600 ml bags and 300 ml cartridges

### MAXFLEX® 800

Self-levelling, high modulus, one-component, polyurethane elastomeric sealant for horizontal joints subject to wheeled traffic.

100 ml/m per 10x10 mm joint

600 ml bags

### PRIMER 1

One-component, solvent-based polyurethane primer for polyurethane elastomeric sealants.

0,13-017 l/m<sup>2</sup>

1 l cans

## 7.3 Silicone-based elastomeric sealant

### MAXFLEX® 600

Recommended Coverage

Packaging

One-component, neutral-curing silicone elastomeric sealant. Available in transparent and grey and white colours.

100 ml/m per 10x10 mm joint

310 ml cartridges

## 7.4 Polysulphide-based elastomeric sealant and primer

### MAXFLEX® 900

Recommended Coverage

Packaging

Low modulus, high chemical resistance, two-component, polysulphide elastomeric sealant for joints subject to permanent immersion. Available fluid version: **MAXFLEX® 900 -F**

100 ml/m per 10x10 mm joint

2,5 l pre-weighed sets

### PRIMER 900

One-component, polyurethane primer for polysulphide elastomeric sealants.

0,45 l/m<sup>2</sup>

1 l cans

## 7.5 Methyl methacrylate-based elastomeric sealant

### MAXFLEX® MMA

Recommended Coverage

Packaging

Low modulus, methyl-methacrylate elastomeric sealant for very fast putting into service.

0,12 kg/m per 10x10 mm joint

25 kg drums

### MAXFLEX® MMA -F

Transparent, methyl-methacrylate reactive resin with low viscosity and fast curing for finishing and sealing for **MAXFLEX® MMA** system.

0,25-0,3 kg/m<sup>2</sup>

20 kg drums

## 7.6 Cement-based elastomeric sealant for joints and cracks

### MAXJOINT® ELASTIC



Recommended Coverage

Packaging

Two-component, cement and acrylic resin based elastomeric repair and sealing mortar for joints, cracks and gaps in concrete, masonry and tiling units. Available in 8 different colours. Suitable for drinking water.

0,3 kg/m per 10x10 mm joint

10 kg and 4 kg pre-weighed sets

## 7.7 Elastomeric band for large expansion joints and gaps

### MAXFLEX® XJS

Recommended Coverage

Packaging

Elastic sealing system composed of thermoplastic elastomeric (TPE) strips provided with lateral geotextile fleece edges for sealing of expansion joints, cracks and corners. Suitable for drinking water. Available in 5 different widths: **XJS 120**, **XJS 140**, **XJS 170**, **XJS 220**, and **XJS 325**.

-----

50 m and 30 length rolls

### MAXFLEX® XJS FPO

Elastic sealing system composed of flexible polyolefine-polyethylene (FPO-PE) strips provided with lateral geotextile fleece edges for sealing of expansion joints, cracks and corners. Available in 2 different widths: **XJS FPO 200** and **XJS FPO 250**.

-----

20 m length rolls

### MAXFLEX® XJS BOND

Polychloroprene bonding agent for junctions and overlaps of **MAXFLEX® XJS** system.

0,25-0,35 kg/m<sup>2</sup>

5 l and 1 l cans

### MAXFLEX® BT

Self-adhesive, cold applied, bitumen waterproofing tape with aluminium protective sheet for sealing of expansion joints, cracks and corners (15 cm wide).

-----

10 m length rolls

### MAXFLEX® CB

Self-adhesive, cold applied, butyl-rubber based waterproofing tape reinforced with non-woven fabric for sealing expansion joints, cracks and corners (8,5 cm wide).

-----

10 m length rolls

# 7 PRODUCTS AND SYSTEMS FOR THE SEALING OF JOINTS

## 7.8 Water-swelling products

### Leakmaster®

One component, water-swelling elastomeric sealant for cold joints subject to permanent immersion in concrete and metal elements

Recommended Coverage

Packaging

600 ml bags and 320 ml cartridges

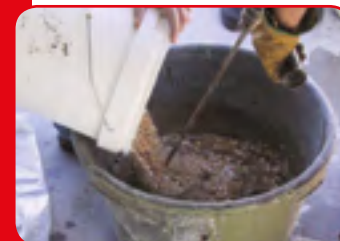
### HYDROTITE®

Water-swelling profiles with expansion ratio of 8:1 for sealing of joints subject to permanent immersion. Available in different shapes and sizes.

Coils

## Admixtures, fibers, curing agents, demoulding agents, solvents, cleaners, meshes and veils

# 8



8.1 Accelerating admixtures

<b>BISEAL® FS</b>	CE	Recommended Coverage	Packaging
Setting-time accelerating liquid admixture for concretes and mortars.		14-25% (v/v mixing water)	25 kg jerry cans and 220 kg drums

8.2 Anti-freeze admixture

<b>BISEAL® AF</b>	CE	Recommended Coverage	Packaging
Anti-free liquid admixture for concretes and mortars.		1,0-3,0% (w/w cement)	25 kg jerry cans and 220 kg drums

8.3 Silica-fume admixture

<b>BISEAL® FUME</b>	CE	Recommended Coverage	Packaging
Densified, silica-fume powder for concretes and mortars.		10% (w/w cement)	20 kg bags

8.4 Waterproofing admixtures

<b>BISEAL® WA</b>	CE	Recommended Coverage	Packaging
Waterproofing liquid admixture for concretes and mortars.		1-3% (w/w cement)	25 kg jerry cans and 220 kg drums

8.5 Air-entraining admixture

<b>BISEAL® CEL</b>		Recommended Coverage	Packaging
Air-entraining liquid admixture for concretes and mortars.		0,5-3,0% (w/w cement)	220 kg drums

8.6 Water-reducing admixtures, plasticizers and superplasticizers

<b>BISEAL® PL</b>	CE	Recommended Coverage	Packaging
Plasticising and water release liquid admixture for concretes and mortars.		0,5-3,0% (w/w cement)	220 kg drums

<b>BISEAL® PL -F</b>		Recommended Coverage	Packaging
Plasticising and retardant liquid admixture for concretes and mortars.		0,5-1,5% (w/w cement)	220 kg drums

<b>BISEAL® POL</b>	CE	Recommended Coverage	Packaging
Polifuncional liquid admixture based on sulphated naphthalene formaldehyde-based for concretes and mortars with improved fluidity and mechanical strengths at equal W/C ratio. Depending on dosage used: superplasticiser, plasticiser or mixing water reducer admixture.		0,3-1,5% (w/w cement)	25 kg jerry cans and 220 kg drums

<b>BISEAL® SCC</b>	CE	Recommended Coverage	Packaging
Superplasticising and high range water reducer admixture based on polycarboxylic polymers for self-compacting concretes and high performance concretes with improved fluidity and mechanical strengths at equal W/C ratio.		0,3-3,0% (w/w cement & puzzolanic compounds)	25 kg jerry cans and 220 kg drums

<b>BISEAL® SPF</b>	CE	Recommended Coverage	Packaging
Superplasticising and high range water reducer admixture based on condensated sulphonated melamine for concretes and mortars with improved fluidity and mechanical strengths at equal W/C ratio.		1,0-3,0% (w/w cement)	25 kg jerry cans and 220 kg drums

8.7 Shrinkage reducing admixture

<b>BISEAL® SRA</b>	Recommended Coverage	Packaging
Shrinkage reducing liquid admixture for concretes and mortars.	0,5-2,0% (w/w cement & puzzolanic compounds)	25 kg jerry cans and 220 kg drums

8.8 Adhesion, workability and physical properties enhancing admixture

<b>MAXCRYL®</b>	Recommended Coverage	Packaging
Water-based acrylic admixture for improved curing, adhesion, workability and mechanical properties of concretes, plasters and mortars.	Depending on use	20 l, 5 l and 2 l jerry cans and 220 l drums

8.9 Setting time retarding admixture and surface setting-retarding product

<b>BISEAL® RETARDER -SH</b>	CE	Recommended Coverage	Packaging
Setting time retarder liquid admixture for concretes and mortars.		0,1-1,0% (w/w cement)	25 kg jerry cans and 220 kg drums

<b>BISEAL® RETARDER -SF</b>		Recommended Coverage	Packaging
Surface-applied, setting-retarder liquid for exposed aggregate concrete surfaces.		0,3 kg/m <sup>2</sup>	30 kg jerry cans

8.10 Catalysts for epoxy-based resins

<b>MAXEPOX® CAT</b>	Recommended Coverage	Packaging
Catalyst suitable for 100% solid and solvent-free epoxy resins from <b>MAXEPOX®</b> range.	2-6% (w/w epoxy resin)	1,5 kg cans

8.11 Thixotropic agent for polyurethane or epoxy-based resins

<b>MAXEPOX® THIX -V</b>	Recommended Coverage	Packaging
Powder-form, thixotropic agent for epoxy or polyurethane resin systems.	2-6% (w/w resin)	1,5 kg cans


8.12 Fiber

<b>BISEAL® FIBER</b>	CE	Recommended Coverage	Packaging
Polypropilene reinforcing fibers for concretes and mortars. Available in two different lengths: 12 and 19 mm.		0,6 kg/m <sup>3</sup> concrete	0,6 kg bags

8.13 Bonding agents and adhesives

<b>MAXBOND®</b>	Recommended Coverage	Packaging
One-component, water-based acrylic bonding agent for improved adhesion of concretes, plasters and mortars on substrates.	0,13-0,2 l/m <sup>2</sup>	25 l and 5 l jerry cans

<b>MAXBOND® -S</b>	Recommended Coverage	Packaging
One-component, water-based acrylic bonding agent with long open time by spraying means for improved adhesion of concretes, plasters and mortars on substrates.	0,15-0,2 kg/m <sup>2</sup>	25 kg jerry cans

<b>MAXBOND® GRIP</b>	Recommended Coverage	Packaging
One-component, bonding agent with aggregates for improved adhesion of concretes, plasters and mortars on tiled surfaces.	0,2-0,4 kg/m <sup>2</sup>	25 kg and 5 kg drums
<b>MAXBOND® LATEX</b>	-----	-----
One-component, styrene-butadiene bonding admixture for improved adhesion, workability and mechanical properties of concretes, plasters and mortars on substrates.		
<b>MAXEPOX® BOND</b> 	Recommended Coverage	Packaging
Two-component, solvent-free, epoxy structural bonding agent for concretes and building materials.	0,3-1,0 kg/m <sup>2</sup>	10 kg, 5 kg and 2 kg pre-weighed sets
<b>MAXEPOX® BOND -S</b>	Recommended Coverage	Packaging
Two-component, solvent-free, epoxy structural bonding agent by spraying means for concrete and building materials.	0,3-1,0 kg/m <sup>2</sup>	5 kg and 2 kg pre-weighed sets
<b>MAXEPOX® BOND -G</b>	Recommended Coverage	Packaging
Two-component, solvent-free, epoxy structural bonding agent for metal plates on concrete surfaces.	0,3-1,0 kg/m <sup>2</sup>	5 kg and 2 kg pre-weighed sets
<b>MAXEPOX® BOND -W</b>	Recommended Coverage	Packaging
Two-component, solvent-free, epoxy structural bonding agent for concretes and building materials on wet substrates.	0,3-1,0 kg/m <sup>2</sup>	10 kg and 5 kg pre-weighed sets

## 8.14 Curing agent

<b>MAXCURE®</b>	Recommended Coverage	Packaging
Surface-applied, water-based acrylic resin curing liquid for fresh concretes and mortars.	0,20-0,25 l/m <sup>2</sup>	25 l jerry cans and 220 l drums

## 8.15 Mould removing agent

<b>BISEAL® MRL</b>	Recommended Coverage	Packaging
Water-based mould release agent for both porous and non-porous forms.	Non-porous: 0,05-0,1 l/m <sup>2</sup> Porous: 0,1-0,2 l/m <sup>2</sup>	25 l jerry cans and 220 l drums

## 8.16 Cleaners and paint removers

<b>MAXCLEAN® -N</b>	Recommended Coverage	Packaging
pH neutral cleaning gel for removal of dirt and pollution stains on natural stone.	0,4-0,5 kg/m <sup>2</sup>	10 kg jerry cans

## 8.17 Solvents

<b>MAXSOLVENT®</b>	Recommended Coverage	Packaging
Special mixture of organic solvents and thinner suitable for applications of <b>DRIZORO®</b> polyurethane-based products.	-----	25 l and 5 l metallic drums
<b>MAXURETHANE® 2C SOLVENT</b>	Recommended Coverage	Packaging
Special mixture of organic solvents and thinner suitable for applications of <b>MAXURETHANE® 2C</b> .	-----	5 l metallic drums
<b>MAXEPOX® SOLVENT</b>	Recommended Coverage	Packaging
Special mixture of organic solvents and thinner suitable for applications of <b>DRIZORO®</b> epoxy-based products.	-----	25 l and 5 l metallic drums

## 8.18 Meshes and veils

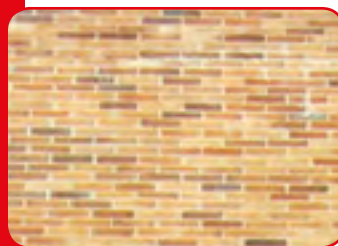
<b>DRIZORO® MESH</b>	Recommended Coverage	Packaging
Alkali-resistant glass fiber mesh fabric for the reinforcement of rendering/plastering/waterproofing coatings and mortars. Available in different weights: <b>DRIZORO® MESH 58 / 130 / 140</b>	-----	Rolls of different wide and length
<b>DRIZORO® VEIL</b>	Recommended Coverage	Packaging
Alkali-resistant glass fiber/polyester non-woven veil for the reinforcement of liquid resin-based coatings. Available in different types and weights: <b>DRIZORO® VEIL G-45 / E-45 / M-100 / E-100</b>	-----	Rolls of different wide and length

## 8.19 Aggregates

<b>DRIZORO® SILICA</b>	Recommended Coverage	Packaging
Well-graded, clean and dry siliceous aggregate with controlled granulometric distribution, free of salts and pollution for mixing of micro-concretes, mortars, coatings and multi-layered flooring system. Available in different aggregate sizes: <b>DRIZORO® SILICA 0020</b> (0 to 0,2 mm size) <b>DRIZORO® SILICA 0102</b> (0,1 to 0,2 mm size) <b>DRIZORO® SILICA 0204</b> (0,2 to 0,4 mm size) <b>DRIZORO® SILICA 0208</b> (0,2 to 0,8 mm size) <b>DRIZORO® SILICA 0308</b> (0,3 to 0,8 mm size) <b>DRIZORO® SILICA 1020</b> (1,0 to 2,0 mm size) <b>DRIZORO® SILICA 3050</b> (3,0 to 5,0 mm size)	-----	25 kg bags

# Tiling and grouting mortars & adhesives for ceramics and tiles

# 9



## TILING AND GROUTING MORTARS & ADHESIVES FOR CERAMICS AND TILES 9

### 9.1 Cement-based and thin-set tiling mortars

Product	CE	Recommended Coverage	Packaging
<b>MAXKOLA®</b>	CE	1,5 kg/m <sup>2</sup> ·mm	25 kg bags
Thin layer, one-component, cement-based adhesive mortar for normal porous tiles on traditional masonry, concrete blocks and renders in indoor applications. Type C1. Available in grey and white colours.			
<b>MAXKOLA® -Y</b>	CE	1,5 kg/m <sup>2</sup> ·mm	25 kg bags
Thin layer, one-component, cement-based adhesive mortar for normal porous tiles on gypsum substrates in indoor applications. Type C1. Available in grey and white colours.			
<b>MAXKOLA® -M</b>	CE	1,5 kg/m <sup>2</sup> ·mm	25 kg bags
High performance, thin layer, one-component, cement-based adhesive mortar for low/normal porous tiles on traditional masonry, concrete blocks and renders in both indoor and outdoor applications. Type C2TE. Available in grey and white colours.			
<b>MAXKOLA® FLEX</b>	CE	1,5 kg/m <sup>2</sup> ·mm	25 kg bags
Flexible and high performance, thin layer, one-component, cement-based adhesive mortar for low/normal porous tiles on traditional masonry, concrete blocks, renders and non-rigid substrates in both indoor and outdoor applications. Type C2TE. Available in grey and white colours.			

### 9.2 Thin-set dispersion adhesive

Product	CE	Recommended Coverage	Packaging
<b>MAXFIX®</b>	CE	1,5 kg/m <sup>2</sup> ·mm	25 kg and 5 kg drums
One-component, acrylic resin-based dispersion adhesive paste for tiles on tiled surfaces.			

### 9.3 Fixing mortars for gypsum or ceramic elements

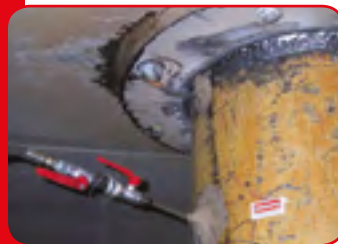
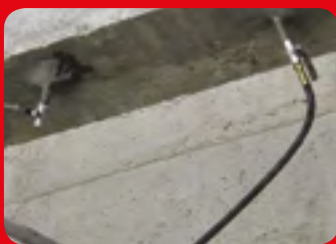
Product	Recommended Coverage	Packaging
<b>MAXFIX® -Y</b>	1,1 kg/m <sup>2</sup> ·mm	18 kg bags
Gypsum-based adhesive mortar for placing of plaster mouldings.		
<b>MAXMORTER®</b>	0,4 kg/m <sup>2</sup> ·mm	20 kg bags
Cement-based binder for mixing of thick-set adhesive mortars for normal porous tiles on traditional masonry, concrete blocks and renders.		

### 9.4 Grouting and tuck-pointing mortars

Product	CE	Recommended Coverage	Packaging
<b>MAXJOINT®</b>	CE	1,7 kg/l	25 kg bags and 5 kg cans
Waterproof, non-shrink, pigmented cement-based pointing mortar for brick/stone masonry (0-4 version suitable up to 4 mm application thickness, and 4-20 version suitable for 4-20 mm application thickness) and cracks on rigid substrates. Available in 10 different colours, and special version for swimming pool : <b>MAXJOINT® POOL</b>			
<b>MAXJOINT® FLEX</b>	CE	1,7 kg/l	25 kg bags
High-performance, flexible, waterproof, non-shrink, pigmented cement-based pointing mortar of high abrasion resistance for brick/stone masonry and cracks on both rigid and non-rigid substrates. Available in grey and white colours.			
<b>MAXJOINT® FLEX POOL</b>	CE	1,7 kg/l	25 kg bags
High-performance, flexible, waterproof, non-shrink, pigmented cement-based pointing mortar for tiles, stone and non-porosity tiles on both rigid and non-rigid substrates with high abrasion resistance and resistance against growing of fungi and algae. Suitable for permanent immersion conditions. Available in grey and white colours.			
<b>MAXJOINT® PAV</b>		2,0 kg/l	25 kg bags
High fluidity cement-based pointing mortar for filling of joints in stone, flagstones or concrete paving.			
<b>MAXEPOX® JOINT</b>		1,65 kg/m <sup>2</sup> ·mm 1,65 kg/l	10 kg pre-weighed sets
Thin layer, two-component, solvent-free, epoxy waterproofing adhesive/pointing mortar with high mechanical and chemical performance for low/none porosity tiles on both special and traditional substrates. Available in grey and white colours.			

# Products and systems for the injection and filling of cracks, voids and interstices

# 10



## PRODUCTS AND SYSTEMS FOR THE INJECTION AND FILLING OF CRACKS, VOIDS AND INTERSTICES 10

### 10.1 Water-reactive polyurethane-based resin injection products and systems

Product Name	CE Marking	Recommended Coverage	Packaging
<b>MAXURETHANE® INJECTION</b>	CE	10-20 l foam/ 1 l resin	25 kg metal drums and 5 kg metal cans (Components A & B)
Two-component, water reactive polyurethane resin-based sealing injection system with high expansion ratio for joints, cracks and fissures with running water leaks in concrete and masonry.			
<b>MAXURETHANE® INJECTION CAT</b>		2-10% (w/w resin)	25 kg metal drums and 5 kg metal cans
Catalyst for <b>MAXURETHANE® INJECTION</b> System.			
<b>MAXURETHANE® INJECTION MONO</b>	CE	10-20 l foam/ 1 l resin	25 kg metal drums and 5 kg metal cans
One-component, water reactive polyurethane resin-based sealing injection system with high expansion ratio for joints, cracks and fissures with running water leaks in concrete and masonry.			
<b>MAXURETHANE® INJECTION MONO CAT</b>		2-10% (w/w resin)	25 kg metal drums and 5 kg metal cans
Catalyst for <b>MAXURETHANE® INJECTION</b> System.			
<b>MAXURETHANE® INJECTION FLEX</b>		10-20 l foam/ 1 l resin	25 kg metal drums
Flexible, two-component, water reactive polyurethane resin-based sealing injection system with high expansion ratio for joints, cracks and fissures subject to movements and vibrations with running water leaks in concrete and masonry.			
<b>MAXURETHANE® INJECTION FLEX CAT</b>		2-10% (w/w resin)	5 kg metal cans
Catalyst for <b>MAXURETHANE® INJECTION</b> System.			
<b>MAXURETHANE® INJECTION CLEANER</b>		-----	25 l metal drums and 5 l metal cans
Organic solvent-based cleaning product for the <b>MAXURETHANE® INJECTION</b> range systems.			
<b>MAXURETHANE® INJECTION -LV</b>		1-2 l foam/ 1 l resin	25 kg metal drums (Components A & B)
Flexible, two-component, water reactive polyurethane resin-based sealing injection system with very low viscosity and low expansion ration for joints, cracks and fissures in concrete and masonry.			
<b>MAXURETHANE® INJECTION TUBE</b>		-----	50 m length rolls
Injection tube system for sealing of fissures and joint to be used with the <b>MAXURETHANE® INJECTION -LV</b> low viscosity polyurethane-based injection resins.			
<b>MAXURETHANE® INJECTION -LV CLEANER</b>		-----	10 l metal cans
Organic solvent-based cleaning product for the <b>MAXURETHANE® INJECTION -LV</b> system.			

### 10.2 Polyurethane-based resin injection product for soil consolidation

Product Name	Recommended Coverage	Packaging
<b>MAXURETHANE® FOAM</b>	7 l foam/1 l resin	25 kg metal drums (Components A & B)
Two-component, reactive polyurethane resin-based consolidating injection system for consolidation of soils and filling of joint and voids.		

### 10.3 Epoxy-based resin injection resin for repair of structural cracks

Product Name	CE Marking	Recommended Coverage	Packaging
<b>MAXEPOX® INJECTION</b>	CE	1 kg/l	5 kg, 2 kg and 1 kg/l pre-weighed sets
Low viscosity, 100% solid and solvent-free, two-component epoxy injection resin for structural repair of fissures and crack in concrete. Suitable for T>15°C.			

# 10 PRODUCTS AND SYSTEMS FOR THE INJECTION AND FILLING OF CRACKS, VOIDS AND INTERSTICES

## MAXEPOX® INJECTION -R

Low viscosity, 100% solid and solvent-free, two-component epoxy injection resin for structural repair fissures and crack in concrete. Suitable for 8°C > T ≤ 15°C.

Recommended Coverage

1 kg/l

Packaging

5 kg, 2 kg and 1 kg/l pre-weighed sets

10.4 Cement-based resin injection product for soil consolidation

## MAXINJECTION® 12

Consolidating injection system composed of ultra-fine cement and admixture for consolidating of soils, rocks and concrete structures.



Recommended Coverage

Depending on W/C ratio and admixture used

Packaging

20 kg drums and 25 kg jerry cans

10.5 High fluidity lime-based injection mortar

## MAXINJECTION® CAL

High fluidity, one-component, lime-based consolidating and filling injection mortar for brick/stone masonry and walls.



Recommended Coverage

1,17 kg/l

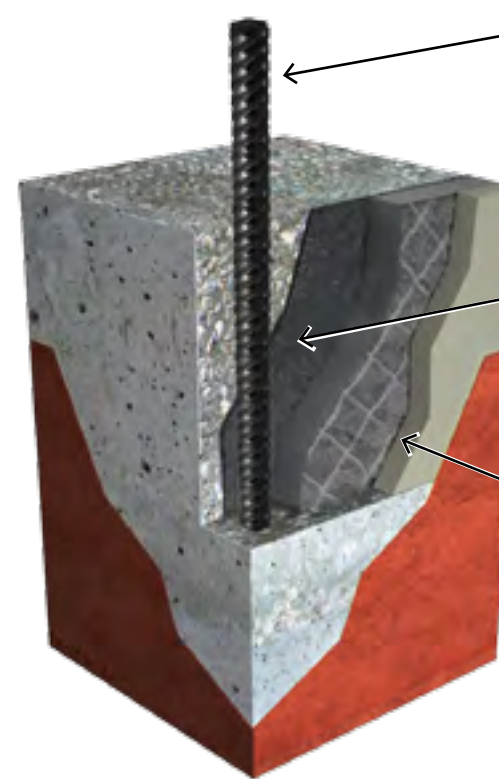
Packaging

15 kg bags

# MONOLITHIC RESTORATION AND PROTECTION OF REINFORCED CONCRETE STRUCTURES



## 3 STEPS IN 1 MORTAR



**1 REINFORCING BAR PASSIVATION**  
**DRIZORO®** structural repair mortars provide compact and durable repairs, completely treating and reinforcing bars and protecting it without the need for additional protections, as certified by the corrosion protection tests according to EN 1504-7.

**2 RECONSTRUCTION**  
 The use of Class R4 structural repair mortars (compressive strength greater than 45 MPa, according to EN 1504-3) provides high strength repairs, fully integrated and working monolithically with the repaired concrete elements.

**3 PROTECTION**  
 Once hardened mortars, the high compactness obtained lead a higher anti-carbonation resistance and very low water absorption by capillary, providing long lasting repairs exposed to aggressive chemicals and water penetration, as certified by ingress protection tests according to EN 1504-2.

## TECHNICAL APPROVAL ACCORDING TO EUROPEAN STANDARDS

EN 1504-3
Structural repair mortar for concrete structures in building and civil engineering works. Type CC and Class R4.
Concrete restoration by applying mortar by hand (Principle 3-CR/Method 3.1), and by spraying mortar (Principle 3-CR/Method 3.3).
Structural strengthening by adding mortar (Principle 4-SS/Method 4.4).
Preserving or restoring passivity by increasing cover to reinforcement with mortar (Principle 7-RP/7.1), and by replacing contaminated concrete (Principle 7-RP/7.2)

EN 1504-7
Active coating with corrosion inhibitors for corrosion protection of steel reinforcement in concrete structures in building and civil engineering works.
Control of anodic areas by painting reinforcement with coatings containing active pigments (Principle 11-CA / Method 11.1), and by painting reinforcement with barrier coatings (Principle 11-CA / Method 11.2)

## PRODUCTS

PRODUCTS	Polymers	Fibers	Inhibitors	Silica Fume	Thickness (mm)	Initial setting time	Class EN-1504-3
MAXREST®					10-30	Rapid (20')	R4
MAXRITE®500	●	●	●	●	5-50	Rapid (10')	
MAXRITE®700	●	●	●	●	5-50	Medium (75')	
MAXRITE®F	●	●		●	5-40	Normal (3-4 h)	



## MAXSEAL® WATERPROOF COATING FOR CONCRETE AND MASONRY




**CONSUMPTION**  
Estimated consumption for **MAXSEAL®** is about 1,5 kg/m<sup>2</sup> per coat, i.e. total 3,0 kg/m<sup>2</sup> applied in two coats.

**PACKAGING**  
4 kg cardboard box (2x 2kg sealed polybags)

**APPLICATION METHOD**

- Weathering resistant
- Suitable for drinking water
- Mixed with water

## MAXREST® STRUCTURAL REPAIR MORTAR FOR CONCRETE




**CONSUMPTION**  
Estimated consumption for **MAXREST®** is about 1,67 kg/m<sup>2</sup> and mm thickness, i.e. 1,0 kg of mortar fills a volume of 0,6 liters.

**PACKAGING**  
4 kg and 1,5 kg cardboard boxes (2x 2 kg and 1x 1,5 kg sealed polybags)

**APPLICATION METHOD**

- Setting time 15-30 min
- Mixed with water
- Easy to use

## MAXPLUG® FAST SETTING MORTAR FOR CONTROL OF RUNNING WATER LEAKS




**CONSUMPTION**  
1,0 kg of **MAXPLUG®** fills a volume of 0,615-0,62 liters, depending of mixing water.

**PACKAGING**  
4 kg and 1,5 kg cardboard boxes (2x 2 kg and 1x 1,5 kg sealed polybags)

**APPLICATION METHOD**

- Setting time 3-5 min
- Mixed with water
- Easy to use

## MAXMORTER® HEAT 750 REFRACTORARY MORTAR



**CONSUMPTION**  
Estimated consumption for **MAXMORTER® HEAT** is about 1,7 kg/m<sup>2</sup> and mm thickness, i.e. 1,0 kg of mortar fills a volume of 0,6 liters.

**PACKAGING**  
4 kg and 1,5 kg cardboard boxes (2x 2 kg and 1x 1,5 kg sealed polybags)

**APPLICATION METHOD**

- Mixed with water
- Suitable up to 750°C

## MAXKOLA® THIN LAYER ADHESIVE MORTAR FOR TILING




**CONSUMPTION**  
Estimated consumption for **MAXKOLA®** is about 7,0 kg/m<sup>2</sup> per 5 mm thickness.

**PACKAGING**  
4 kg and 1,5 kg cardboard boxes (2x 2 kg and 1x 1,5 kg sealed polybags)

**APPLICATION METHOD**

- High adhesion
- Allows to rectify
- Mixed with water

## MAXJOINT® POINTING MORTAR FOR BRICK/STONE MASONRY AND TILES



**CONSUMPTION**  
1,0 kg of **MAXJOINT®** fills a volume of 0,6 liters.

Estimated consumption for **MAXJOINT®** is 1,7 kg/m<sup>2</sup> per 10 mm depth and 10 mm width joints (20 cm x 20 cm tiles).

**PACKAGING**  
4 kg and 1,5 kg cardboard boxes (2x 2 kg and 1x 1,5 kg sealed polybags)

**APPLICATION METHOD**

- Weathering resistant
- Mixed with water
- Waterproofing performance against rain

# DRIZORO SYSTEM FOR WATERPROOFING AND FINISHING OF SWIMMING POOLS

MAXSEAL® FLEX – CONCRESEAL® PLASTERING – MAXURETHANE® 2C (POOL)



## CONTACT

**DRIZORO®** provides diverse channels to solve any doubt or further information required about its products and systems, or to request any additional information.



## CUSTOMER SUPPORT:

Our Technical Department is at your disposal for any questions that you may need solved easily and quickly by phone/fax:

+34 916 766 676

+34 916 776 175

+34 916 757 813 (Fax)

If you prefer, you can send your inquiries via email to:

[info@drizoro.com](mailto:info@drizoro.com)

or, to the following postal address:

**C/ Primavera 50-52**

**Polígono Industrial Las Monjas**

**28850 Torrejón de Ardoz - Madrid - SPAIN**

## For your convenience:

- Technical Bulletins,
- Safety Data Sheets,
- Declarations of Performance,
- Jobs References,
- New Products and Systems, and other useful and update information,

is available on **DRIZORO®** Web site:

[www.drizoro.com](http://www.drizoro.com)



# TECHNICAL SOLUTIONS



① Waterproofing of roofs and terraces

② Restoration of façades

③ Structural strengthening and repair of concrete structures

④ Treatments for raising dampness

⑤ Waterproofing of foundations

⑥ Waterproofing of basements and elevator pits

⑦ Restoration and finishing of flooring systems

⑧ Waterproofing of swimming pools and drinking water tanks

**DRIZORO**

Construction Products

## **DRIZORO, S.A.U.**

C/ Primavera, 50-52 Parque Industrial Las Morjas  
28850 TORREJÓN DE ARDOZ - MADRID (Spain)

Tel.: (+34) 91 676 66 76 - (+34) 91 677 61 75 FAX: (+34) 91 675 78 13

E-mail: [info@drizoro.com](mailto:info@drizoro.com) - Web: [www.drizoro.com](http://www.drizoro.com)

Reproduction, manipulation by computer, and transmission in whole or in part in any form or by any means (electronically, mechanically, by photocopying, recording, or otherwise) without the prior written consent of the copyright owner are prohibited.

[www.drizoro.com](http://www.drizoro.com)

© DRIZORO S.A.U.