



PRODUCTS AND SYSTEMS



Restoration, Protection and Finishing of Facades



Waterproofing, Repair, Protection and Finishing Systems for
Facades and Historical Heritage Buildings



COMPANY

DRIZORO S.A.U. is a Spanish company founded in 1977, starting its activity as a manufacturer of chemical products for construction. It is now a benchmark for the sector in solutions for civil engineering and building, in the fields of waterproofing, restoration, protection and finishing of concrete structures.

From our Headquarters and Production Center in Torrejón de Ardoz (Madrid) all the operations of the different departments are managed; production, R & D, laboratory, technical, sales, marketing and administration.

COMMITMENT TO QUALITY AND THE ENVIRONMENT

Our strong commitment with Quality and the Environment policies, drive us to the implementation of an Integrated Management System based on ISO 9001 and ISO 14001 standards, and certified by Bureau Veritas Quality International.

COMMITMENT TO RESEARCH, DEVELOPMENT AND INNOVATION

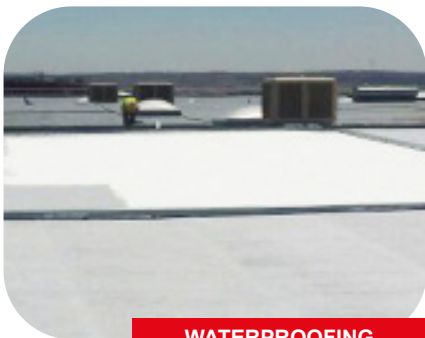
Our continuous commitment to research and development policies, investing both in human resources and in technical means, allows us to offer the market solutions based on the high quality and latest technology systems, and provide innovative solutions supported also by a proven and tested experience under the most adverse conditions throughout the entire world geography.

TECHNICAL SUPPORT

Our Technical Department and our Sales Department, consisting of technical professionals with extensive experience in the sector, offers advice in a personalized manner both in the design phase and in the execution phase, with the aim of reaching an optimal prescription and implementation of our proposed products and systems.



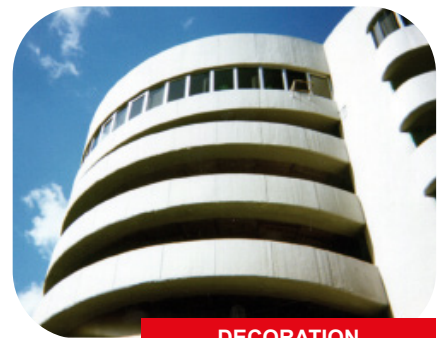
DRIZORO® TECHNICAL SOLUTIONS



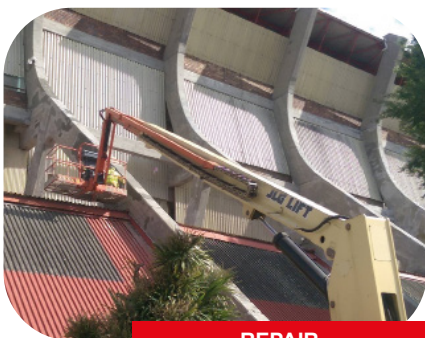
WATERPROOFING



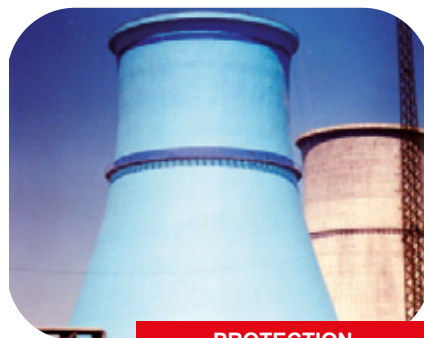
STRENGTHENING



DECORATION



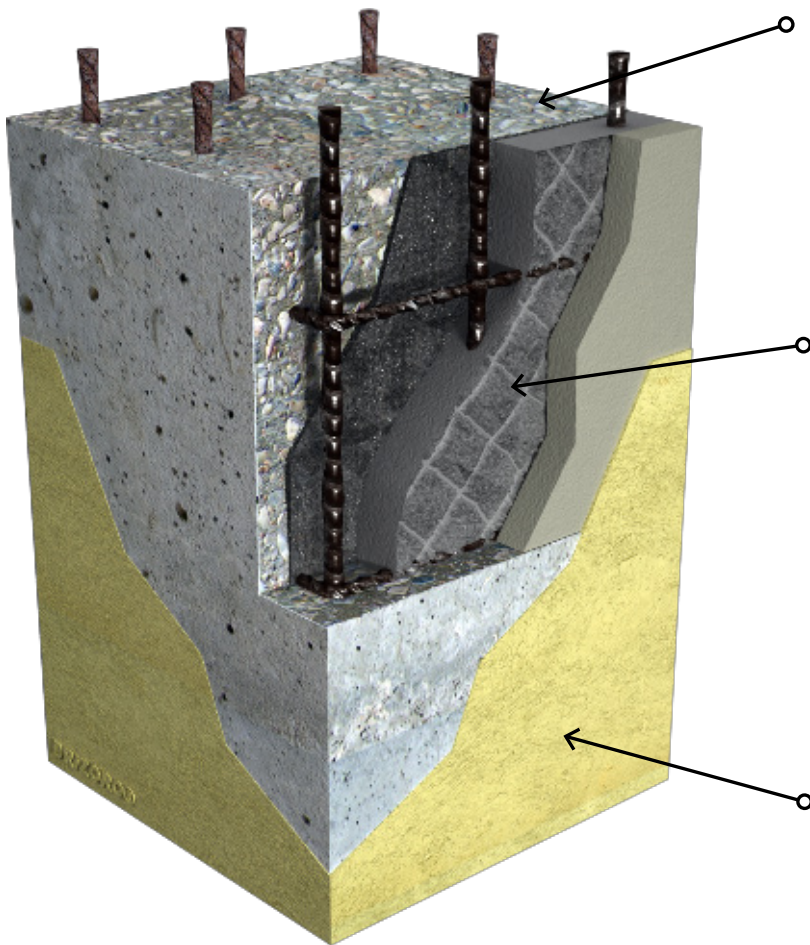
REPAIR



PROTECTION



OTHER USES



1 STEEL REINFORCEMENT TREATMENT

Treat the steel reinforcements affected by corrosion processes by removing the corrosion and applying a suitable coating based on passivating chemicals and corrosion inhibiting agents such as **MAXREST[®] PASSIVE** or **MAXRITE[®] PASSIVE**, respectively.

2. REPAIR

A) Structural Repair

Repair the concrete element by applying structural repair mortars from the **MAXREST[®]** and **MAXRITE[®]** range, type "Class R3" and "Class R4" according to EN 1504-3, which provide a durable, highly resistant, and fully integrated repair.

B) Non-structural Repair

Reconstruction of edges, filling and levelling of small superficial irregularities or cracks by applying the **CONCRESEAL[®]-5**, **CONCRESEAL[®]-3** and **CONCRESEAL[®] COSMETIC** non-structural repair mortars (cosmetics).

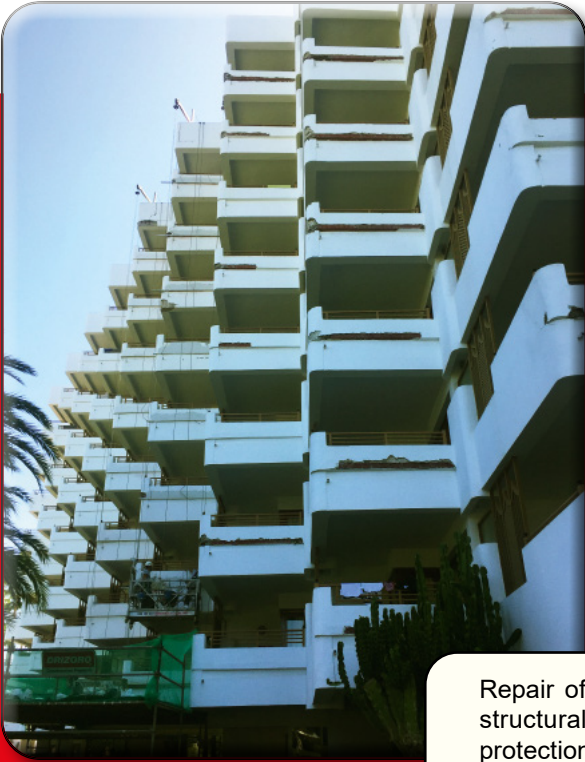
3. DECORATIVE FINISH AND PROTECTION

Finally, provide the protection of the repaired area against the weathering, water ingress, chloride ingress, carbonation or chemical attack, according to EN 1504-2 "surface protection systems" by means of flexible cement anti-carbonation coating **MAXSEAL[®] FLEX**, transparent water-repellent siloxane impregnations **MAXCLEAR[®] TOP**, migrating corrosion inhibitor **MAXRITE[®] INHIBITOR** or elastic anti-carbonation acrylic coating **MAXSHEEN[®]/ MAXSHEEN[®] ELASTIC**.



Repair of slab fronts by pouring the **MAXGROUT[®]** fluid structural repair mortar, after treating the reinforcement with the **MAXREST[®] PASSIVE** oxide converter/passivating liquid.

CONCRETE REPAIR



Repair of balconies with the **MAXREST**[®] fast-setting structural repair mortar, and then waterproofing, protection and decoration with the **CONCRESEAL**[®] **PLASTERING** rendering mortar.



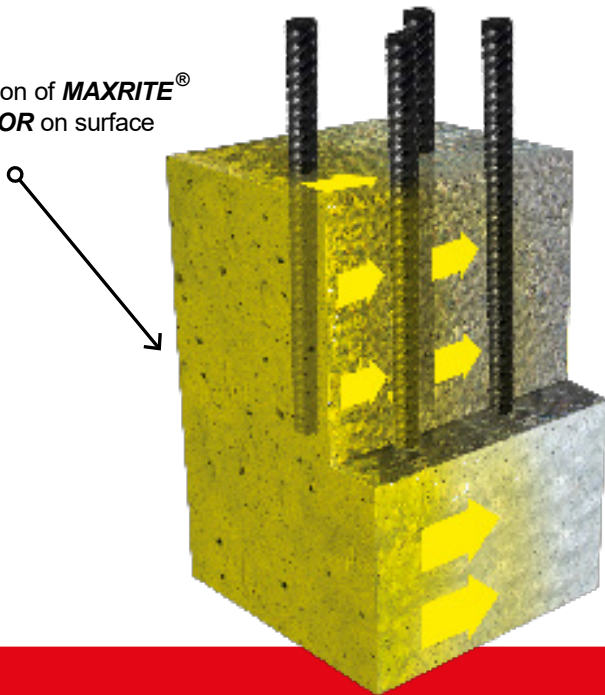
Repair and structural strengthening by **DRIZORO**[®] **WRAP** carbon fiber system of balconies and then protection and decoration.

MAXRITE® INHIBITOR

MAXRITE® INHIBITOR is a transparent liquid product based on migrating corrosion inhibitors applicable directly on the concrete surface. Once applied, the product migrates inwards, providing anticorrosive protection for the reinforcements, increasing the durability and service-life of concrete by up to 4 times exposed to aggressive environments compared to non-treated concrete surfaces, according to ASTM G-109.

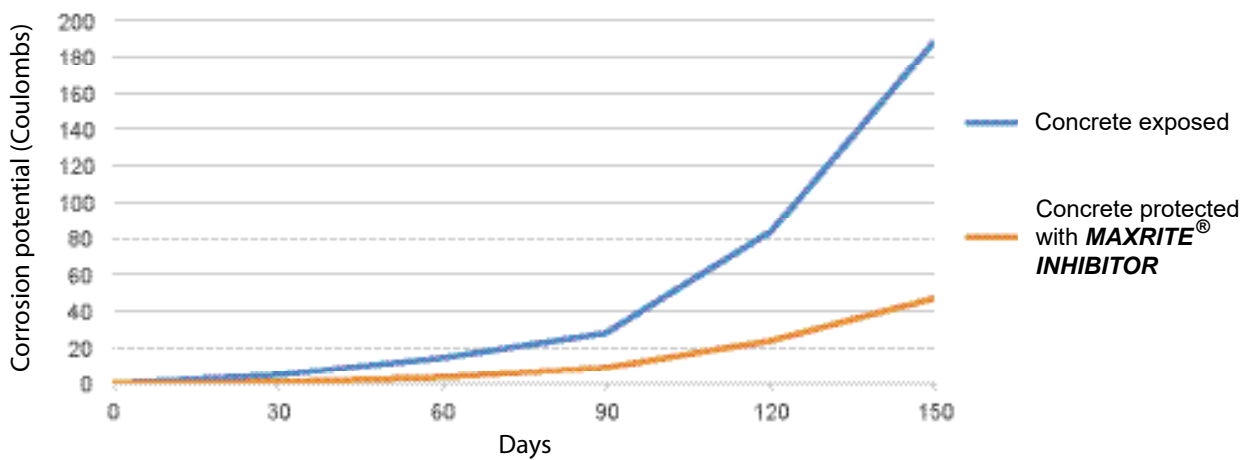
As a result of its great migrating properties, it penetrates up to 60 mm in concrete structures, creating a protective barrier around the reinforcements that prevents the access of water, chlorides, and other aggressive agents to the steel, thus stopping the corrosion process.

Application of **MAXRITE® INHIBITOR** on surface



Application and migration process for **MAXRITE® INHIBITOR** in concrete elements.

Performance of **MAXRITE® INHIBITOR** on reinforced concrete



ASTM G-190. Standard Test Method for Determining Effects of Chemical Admixtures on Corrosion of Embedded Steel Reinforcement in Concrete Exposed to Chloride Environments

WATERPROOFING AND RENDERING MORTARS

The range of **CONCRESEAL®** cement-based mortars are suitable for waterproofing, protection and decoration of facades and other vertical walls with **CONCRESEAL® PLASTERING** being this mortar the most recommended suitable option for these intended uses.

CONCRESEAL® PLASTERING



ADVANTAGES

- Provides three intended uses: waterproofing, protection and decoration in a single application.
- Prevents deterioration for substrate, preventing the ingress for water and other aggressive chemicals.
- Permeable to water vapor, allowing the substrate to breathe.
- Excellent adhesion, no bonding agents required.
- Integrates into the substrate, filling and sealing all the pores.
- Long lasting, without maintenance.
- Suitable for spraying means.
- Reduced application thicknesses, maintains the shapes of architectural concrete.

CONCRESEAL® PLASTERING is a cement-based mortar composed of selected silica sand and special additives, suitable for waterproofing, levelling, protection and finishing of concrete surfaces, precast elements, stone/brick masonry or other coatings, in a single application with a thickness between 3 and 5 mm. Available in a fine textured version, i.e. smaller grain size; **CONCRESEAL® PLASTERING REGULAR**.



WATER-REPELLENT AGENTS / TRANSPARENT SEALANTS

DRIZORO[®] surface protection systems and products for concrete comply with the Principles of Protection Against Ingress, Humidity Control and Improvement of both Physical and Chemical Resistance provided by the EN-1504 Standard.



PRODUCT	SUBSTRATE	PROPERTIES		
		FILM	BASE	RESIN
HYDROPHOBIC IMPREGNATION / WATER-REPELLENT AGENTS (no film)				
MAXCLEAR[®]	Concrete, Mortar, Tile (No Lime, No Gypsum)	NO	Solvent	Siloxane
MAXCLEAR[®] -D	Lime / Gypsum	NO	Water	Silicone
MAXCLEAR[®] TOP	Concrete, Mortar, Tile	NO	Water	Silane/Siloxane
IMPREGNATION / TRANSPARENT SEALANTS (no film)				
MAXGLAZE[®]	Concrete, Mortar, Tile	YES (Matt)	Solvent	Acrylic
MAXGLAZE[®] -D	Concrete, Mortar, Tile	YES (Glossy)	Solvent	Methacrylic
CONSOLIDATING AGENT				
MAXCLEAR[®] CONSOLIDATED	Concrete, Mortar, Tile, Stone	NO	Solvent	Siliceous
ANTI-GRAFFITI SYSTEM				
MAXCLEAR[®] GRAFFITI	Concrete, Mortar, Tile, Stone, Marble	YES (Matt)	Water	Acrylic
MAXCLEAN[®] ECOGEL	Previously treated with MAXCLEAR[®] GRAFFITI	NO	-	-



Restoration and consolidation of natural stone in facades with **MAXCLEAR® CONSOLIDATED**.



Protection and finishing of brick masonry in facades with **MAXGLAZE®** transparent sealant.

ACRYLIC COATING (EN 1504-2)

MAXSHEEN®

Flexible acrylic coating suitable for waterproofing, protection and decorative finishing of surfaces and exterior walls.



MAXSHEEN® ELASTIC

Elastomeric acrylic coating with high crack bridging capability performance (no cracking due to substrate movement) for waterproofing, protection, and decorative finishing of surfaces and exterior walls.



ADVANTAGES



Excellent ANTI-CARBONATION PROTECTION. Very high resistance to CO₂ diffusion, preventing corrosion of steel reinforcements.



PERMEABLE TO WATER VAPOR, allows the substrate to breathe.



Resistant to UV RAYS. Great colour stability.



Very good ADHESION to concrete, brick, render, plaster...



Wide VARIETY OF COLOURS and two texture versions: smooth and rough.



WATERPROOF to rainwater and weathering resistant.



Easy to apply, high yields. Easy to clean.



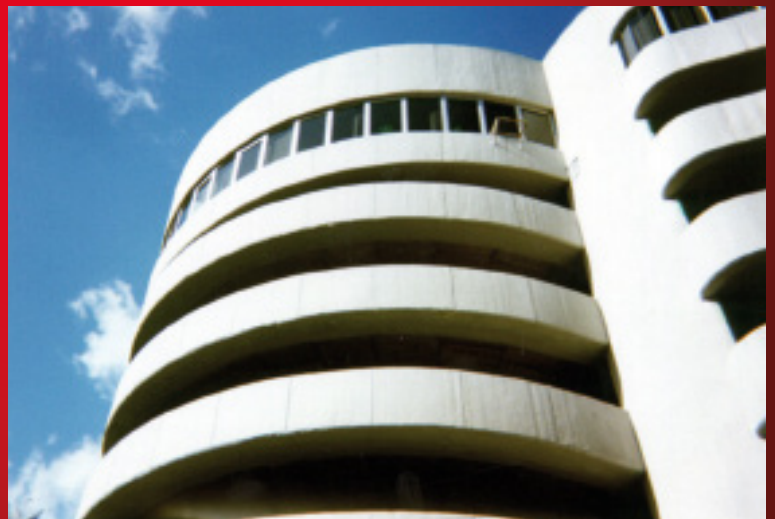
Waterproofing, protection,
and decoration of facades
with **MAXSEEN®**.

CEMENT-BASED MORTARS (EN 1504-2)

MAXSEAL® FLEX

Two-component, flexible, cement-based waterproofing mortar:

- Waterproofing performance.
- Permeable to water vapor, allows the substrate to breathe.
- Excellent protection against both CO_2 and/or chlorides ingress.
- Decorative finishing of great durability, and practically no maintenance required.

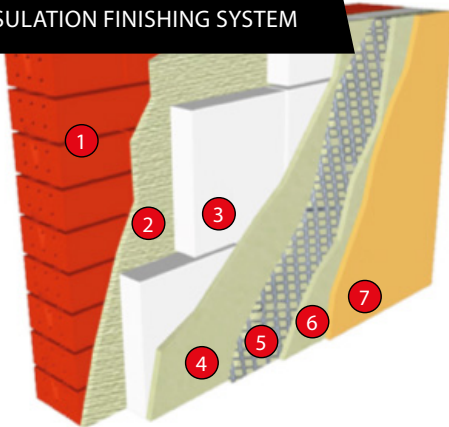


Available in standard rough and smooth versions, and grey/white and other soft colours (**MAXSEAL® FLEX DECOR** version).

DRIZORO® SYSTEMS FOR THERMAL INSULATION ON FACADES

PRODUCT	BASE			COATING	MORTAR	ELASTICITY	WATERPROOFNESS	THERMAL INSULATION	ANTICARBONATION PROTECTION	UV RESISTANCE	PERMEABILITY TO VAPOUR	SUITABILITY FOR EPS/XPS PANELS
	CEMENT	ACRYLIC	PU									
MAXELASTIC® TH		●		●		●	●	●	●	●		
MAXELASTIC® PUR THERMOCOAT			●	●		●	●	●		●		
MAXMORTER® TH	●				●			●		●	●	
CONCRESEAL® TH	●				●		●			●	●	●

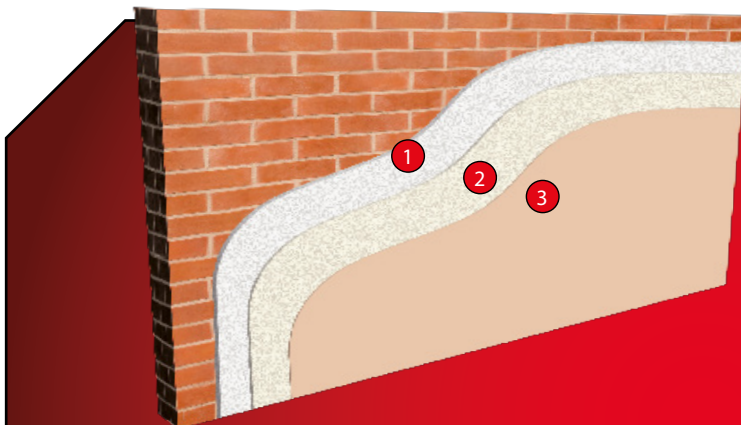
EXTERIOR INSULATION FINISHING SYSTEM



External Thermal Insulation System applied on a concrete or masonry to provide thermal insulation, waterproofing and protection against the weathering.

- 1- Brick or concrete block
- 2- Layer of **CONCRESEAL® TH** (6 mm - trowel)
- 3- Polystyrene insulating panel
- 4- 1st coat of **CONCRESEAL® TH**
- 5- **DRIZORO® MESH** 140 fiberglass mesh
- 6- 2nd coat of **CONCRESEAL® TH**
- 7- **MAXSHEEN®** or **MAXQUICK®** decorative finish

REHABILITATION SYSTEM FOR LIME SUBSTRATES



1- MAXMORTER® CAL (t ≤ 10 mm)
Lime-based mortar, applied in layers up to 10 mm thick, for:

- General restoration of facades, walls, and galleries in historical buildings.
- Repair and sealing of brick and stone joints.
- Filling of cavities in walls.
- Coating of masonry units.

2- MAXMORTER® CAL -F (1 mm ≤ t ≤ 3 mm)
Fine-textured lime-based mortar (thin layer: 1-3 mm) for decorative finishing by trowelling over thicker- textured previous renders.

3- MAXMORTER® CAL GLAZE (optional) (t ≤ 1 mm)
Very fine-textured lime-based mortar suitable for stucco with a very smooth and shiny texture finishing and high decorative performance, both in interior and exterior applications.

ADVANTAGES FOR SYSTEM

- Permeable to water vapor, allows the substrate to breathe.
- Cement-free formula, fully compatible with weak and deteriorated substrates.
- High workability and ease to apply.
- Salt-free formula.



DRIZORO
Construction Products

- ① WATERPROOFING OF ROOFS AND TERRACES
- ② RESTORATION OF FACADES
- ③ WATERPROOFING OF INDOOR WET AREAS: BATHROOMS/KITCHENS
- ④ WATERPROOFING OF FOUNDATIONS AND UNDERGROUND STRUCTURES
- ⑤ TREATMENTS OF RISING DAMPNESS
- ⑥ REPAIR AND STRENGTHENING OF STRUCTURES
- ⑦ FLOORING SYSTEMS OF COMMUNAL AND PARKING AREAS
- ⑧ WATERPROOFING OF BASEMENTS AND ELEVATOR PITS
- ⑨ WATERPROOFING OF SWIMMING POOLS AND DRINKING WATER TANKS

DRIZORO
Construction Products

DRIZORO, S.A.U.

C/ Primavera, 50-52 Parque Industrial Las Monjas
28850 TORREJÓN DE ARDOZ - MADRID (Spain)
Phone.: (34) 91 676 66 76 - (34) 91 677 61 75 FAX: (34) 91 675 78 13
E-mail: info@drizoro.com - Web: www.drizoro.com