



Products from **DRIZORO®** range

FOR WAREHOUSE AND DISTRIBUTION





DRIZORO®, **S.A.U.** is a Spanish company established in **1977**, beginning activity its a manufacturer of chemical products for construction. Nowadays, the company is a leader on supplying speciality products and systems designed for waterproofing, concrete repair, flooring, and decorative finishes.

Our **Headquarters** and Production Plant is based in **Madrid** (Torrejón de Ardoz) - Spain. This is also the base for all operations of the different departments; Production, Research & Development, Laboratory, Technical, Sales, Marketing and Administration.

COMMITMENT TO QUALITY AND ENVIRONMENT

Our strong commitment to Quality Control and the Environment has led us to establish an Integrated Quality and Environmental Management System. This is based on the ISO 9001:2015 and ISO 14001:2015 standards, and it was certified by *Bureau Veritas Quality International*.



COMMITMENT TO RESEARCH, DEVELOPMENT, AND INNOVATION

Our strong commitment to Research and Development of both our product range and of human resources enables us to offer the market innovative systems with a high standard of quality whilst being mindful of environmental concerns. These developments are transferred into improvements to our products range. This is based on substantial market research, including onsite experience under the most adverse worldwide conditions, combined with laboratory studies.

TECHNICAL ASSISTANCE

Our Technical Department and Sales Network comprises of highly qualified professionals with wide experience and trained in the construction industry. They provide personalized advice to our clients during all phases of construction in order to specify the most suitable system of products.

PRODUCTS AND SYSTEMS FOR PROTECTION AND WATERPROOFING

CEMENT-BASED COATING AND MORTARS FOR WATERPROOFING

MAXSEAL® -M

CEMENT-BASED WATERPROOF COATING FOR CONCRETE AND MASONRY



USES

- Waterproofing of:
 - Drinking water tanks, reservoirs, swimming pools.
 - Basements, galleries, tunnels.
- Protection against weathering of façades and walls, concrete blocks, pre-cast panels, etc.

ADVANTAGES



Weathering resistant



Only water for mixing



Suitable for drinking water

- Suitable for both direct and indirect pressure conditions.
- Resistance to permanent immersion conditions.
- Application on wet substrates.
- Once cured, can be tiled or covered with mortars.

PACKAGING



25 kg bags, and 25 kg and 5 kg metal cans

COLOURS: Grey and white

VERSION: One-component, polymer modified formula: **MAXSEAL® -M**

CONSUMPTION: 2x 1,0-1,5 kg/m²

APPLICATION METHOD



MAXSEAL® FLEX

TWO-COMPONENT, FLEXIBLE CEMENT-BASED WATERPROOF COATING FOR CONCRETE AND MASONRY



USES

- Waterproofing of:
 - Drinking water tanks, reservoirs, channels swimming pools, lagoons, dams.
 - Basements, retaining walls, foundations, galleries, tunnels, elevator pits.
- Protection against dampness, rain, carbonation, and aggressive environments of façades and walls.
- Waterproofing under tiles: terraces, balconies, bathrooms, kitchens, and indoor wet areas.
- Waterproofing of planter boxes, gardens.

ADVANTAGES



Weathering resistant



Easy to use



Suitable for drinking water

- Full-flexible waterproof coating.
- Suitable for both direct and indirect pressure conditions.
- Application over wet substrates.
- UV resistant.

PACKAGING



35 kg (standard) or 32 kg (smooth), and 7 kg pre-weight sets

COLOURS: Grey and white

VERSION: Standard (rough) / Smooth

CONSUMPTION: 2x 1,0-1,5 kg/m²

APPLICATION METHOD



MAXSEAL® FLEX EXPRESS

TWO-COMPONENT, FLEXIBLE CEMENT-BASED WATERPROOF COATING FOR CONCRETE AND MASONRY



USES, ADVANTAGES & CONSUMPTION

Same uses than **MAXSEAL® FLEX**

- **Curing time:** 2 hours (tiling) / 2 days (permanent immersion conditions)



PACKAGING

35 kg and 7 kg pre-weight sets

COLOUR: Grey

CONSUMPTION: 2x 1,0-1,5 kg/m²



APPLICATION METHOD



MAXSEAL® FLEX -M

ONE-COMPONENT, POLYMER-MODIFIED,
FLEXIBLE CEMENT-BASED WATERPROOF
COATING FOR CONCRETE AND MASONRY



USES, ADVANTAGES & CONSUMPTION

See **MAXSEAL® FLEX**

- **Curing time:**
3 days (tiling) / 7 days
(permanent immersion conditions)
- **Consumption:**
2x 1,0-1,5 kg/m²



PACKAGING

22 kg bags
COLOURS:
Grey and white



MAXPLUG®

FAST-SETTING MORTAR FOR
STOPPING OF WATER LEAKS



USES

- Stopping of water leaks.
- Sealing of concave corners, joints, and grooves in waterproofing jobs.
- Emergency repairs on concrete water pipes.
- Anchoring of bolts and other metal elements.

ADVANTAGES



Fast setting:
3-5 min



Only water for
mixing



Easy to
use

- Does not shrink or crack.
- Setting time can be controlled by warm or cold water.
- Mechanical properties higher than concrete.
- Non-toxic. Suitable for drinking water.
- Sets underwater.

PACKAGING



25 kg and 5 kg metal cans
COLOUR: Grey

CONSUMPTION:
1,0 kg of **MAXPLUG®** fills 0,61-0,62 L,
depending on amount of mixing water used

APPLICATION METHOD



ELASTOMERIC LIQUID MEMBRANES FOR WATERPROOFING OF ROOFS

MAXELASTIC®

ELASTOMERIC ACRYLIC LIQUID
WATERPROOFING MEMBRANE FOR ROOFS



USES

- Waterproofing of roofs, terraces, and balconies.
- Sealing and waterproofing of cracks, corners, joints.
- Protection of PU foam insulation.
- Waterproofing and protection on tiles, metal plates, and fibre-cement boards.

ADVANTAGES



Weathering
resistant



Easy to
use

- Excellent elasticity and crack-bridging properties. Forms a seamless continuous coating.
- Good adhesion, no primer required.
- Good flexibility in a wide temperature range: -20°C to 90°C.
- Environmentally friendly.
- UV resistant.

PACKAGING



25 kg and 5 kg drums
COLOURS: 6 colours (green, white, grey, red, brick and black)

VERSIONS: Fiber-modified version

CONSUMPTION: 2x 1,0-1,5 kg/m²



APPLICATION METHOD



MAXELASTIC® PUR -HW

ELASTOMERIC WATER-BASED
HYBRID POLYURETHANE LIQUID
WATERPROOFING MEMBRANE FOR
ROOFS AND OUTDOOR AREAS



USES

- Waterproofing of trafficable roofs, green roofs, terraces, and balconies.
- Sealing and waterproofing of cracks, corners, joints.
- Protection of PU foam insulation.
- Waterproofing under tiles
- Waterproofing and protection on tiles, metal plates, and fibre-cement boards.
- Rehabilitation and waterproofing of metal roofs and roofs previously treated with bitumen membranes.

ADVANTAGES



Weathering resistant



Easy to use

- Excellent elasticity and crack-bridging properties. Forms a seamless continuous coating.
- Resistant to water ponding.
- Good flexibility in a wide temperature range: -20°C to 90°C.
- Environmentally friendly.
- UV resistant.

PACKAGING

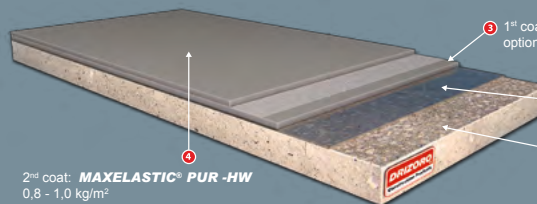


25 kg and 5 kg drums

COLOURS: 5 colours
(green, white, grey, red, and black)

CONSUMPTION: 2x 0,8-1,0 kg/m²

APPLICATION METHOD



2nd coat: **MAXELASTIC® PUR -HW**
0,8 - 1,0 kg/m²

1st coat: **MAXELASTIC® PUR -HW** 0,8 - 1,0 kg/m²,
optionally reinforced with **DRIZORO® MESH 58**

2 Priming: **MAXEPOX® PRIMER -W**
0,2 - 0,3 kg/m²

1 Substrate preparation

MAXELASTIC® PUR THERMOCOAT

ELASTOMERIC WATER-BASED
POLYURETHANE LIQUID MEMBRANE FOR
WATERPROOFING AND
THERMAL INSULATION OF ROOFS

USES

- Low thermal conductivity and waterproofing membrane for roofs and outdoor areas exposed to UV-rays: flat roofs, terraces, balconies, decks, facades, partition walls, tile roofs, metal roofs, fiber-cement panels, etc.
- Protection of PU insulation foams.

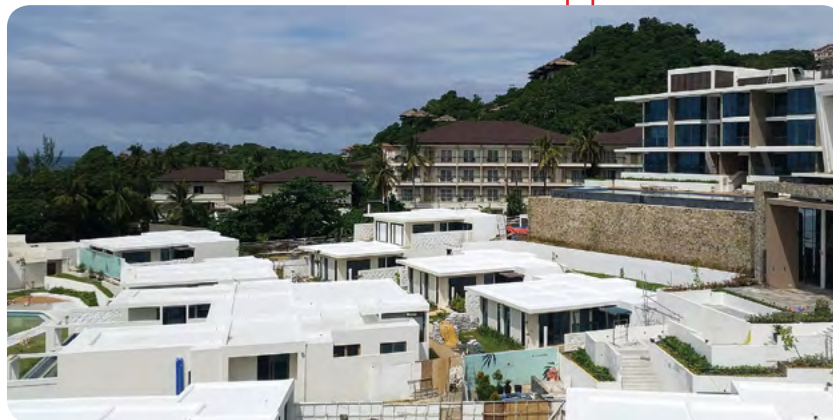
ADVANTAGES

- Reduces the temperature of the exposed surface (about 10 °C), and energy costs for cooling/air conditioning.
- High elasticity and excellent crack-bridging capability.
- Continuous waterproofing membrane.
- High colour stability. Resistant to water ponding.
- Environmentally friendly.

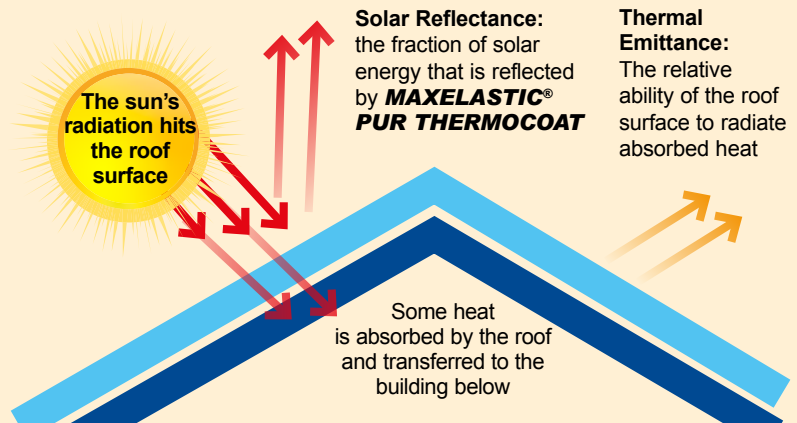
PACKAGING

22 kg metal drums
COLOUR: White

CONSUMPTION:
2x 0,6-0,9 kg/m²



The **MAXELASTIC® PUR THERMOCOAT** system, due to its high values for solar reflectance and thermal emittance, contributes to the cooling of the indoors, thus increasing comfort inside the building. Likewise, this system also improves energy efficiency since the surface reflects sunlight and dissipates heat, keeping the interior in suitable conditions when there is a high temperature outside.



PRODUCTS AND SYSTEMS FOR WATERPROOFING, PROTECTION AND DECORATION OF FAÇADES AND SURFACES

WATER REPELLENT AND TRANSPARENT SEALERS FOR FAÇADES

MAXCLEAR® TOP

WATER-BASED SILANE/SILOXANE HYDROPHOBIC SEALER/WATER REPELLENT/ IMPREGNATION FOR CONCRETE, STONE, MASONRY



USES

- Protection of architectural concrete, bridges, cooling towers, façades (brick, natural stone, ceramic), pre-cast elements.
- Hydrophobic impregnation of tiles and other porous elements.

ADVANTAGES

- Transparent and no-visible protection with waterdrop effect.
- Allows the water vapour diffusion.
- Great penetration depth.
- Suitable for green concrete or mortars.
- UV resistant.
- Environmentally friendly.

PACKAGING

25 L drums and 5 L jerry cans

CONSUMPTION:

Non porous substrates:
2x 0,2-0,3 L/m²
Porous substrates:
2x 0,4-1,0 L/m²



MAXCLEAR® -D

WATER-BASED TRANSPARENT SILICONE HYDROPHOBIC SEALER/WATER REPELLENT/IMPREGNATION FOR CONCRETE AND LIMESTONE FAÇADES



USES

- Protection for limestone façades and interior plasters, gypsum products and low-fired clay products.
- Water repellence and protection of traditional brick façades, concrete elements, and single layer mortars.



ADVANTAGES

- Transparent and no-visible protection with waterdrop effect.
- Only one coat application.
- Allows the water vapour diffusion.
- Great penetration depth.
- UV resistant.
- Environmentally friendly.

PACKAGING

25 L drums and 5 L jerry cans



CONSUMPTION:

1x 0,17-0,4 L/m²

ACRYLIC COATING FOR WATERPROOFING, PROTECTION AND DECORATION

MAXSHEEN® ELASTIC

ELASTIC ACRYLIC ANTI-CARBONATION WATERPROOFING, PROTECTIVE AND DECORATIVE COATING FOR SURFACES FAÇADES AND MASONRY



USES

- Waterproofing, decoration, and protection (marine environment, pollution) of concrete structures, bridges, residential buildings, façades and architectural concrete.

ADVANTAGES

- Excellent protection against carbonation.
- Permeable to water vapour.
- Very good crack-bridging capability.
- Very high adhesion on concrete, renders, bricks, stone, wood, gypsum plasters, etc.
- Good resistance to stains and dirt. Easy to clean.
- Long-lasting: Excellent UV/weathering resistance and colour stability.
- Environmentally friendly.

PACKAGING

25 kg drums

COLOURS: 16 different

VERSIONS:

- Smooth / Textured (aggregates in formula)
- Flexible: **MAXSHEEN®**

CONSUMPTION:

Smooth: 2x 0,2-0,3 kg/m²
Textures: 2x 0,3-0,4 kg/m²



THERMOSAN®

CEMENT-BASED MACROPOROUS MORTAR FOR TREATMENT OF RISING DAMPNSS



USES

- Treatment of rising dampness and the condensation by cold wall effect over damp substrates, interior or exterior, underground or not, for walls and wall footings.

ADVANTAGES

- Very permeable to water vapour.
- Delays the appearance of salts on concrete and masonry.
- Self-ventilating performance drains and dries the substrate.

PACKAGING

25 kg bags
COLOUR: Grey

CONSUMPTION:
1x 1,0-1,2 kg/m²·mm
(x 20-50 mm)



THERMOSAN® -F

CEMENT-BASED DECORATIVE AND PROTECTIVE MICROPOROUS MORTAR FOR FINISHING OF THERMOSAN®



USES, ADVANTAGES & CONSUMPTION

See **THERMOSAN®**

- Protection against rain and mechanical damages for **THERMOSAN®**.
- Combined with **THERMOSAN®**, provides waterproof and decorative exterior finish for façades and walls exposed to rising dampness.
- **Consumption:** 1x 1,8-2,0 kg/m²·mm (x 7-12 mm)

PACKAGING

25 kg bags
COLOURS: (8) White, cream, ink, Ivory, salmon drack/light blue and terracotta



MAXCLEAR® INJECTION

CONCENTRATED WATER-BASED SILOXANE INJECTION SYSTEM FOR TREATMENT OF RISING DAMPNSS



USES

- Damp-proof courses injected under gravity or pressure for masonry and walls affected by capillary moisture.

ADVANTAGES

- Allows the substrate to breath.
- Suitable for thick walls and high level of dampness.
- High penetration into substrate.
- No aesthetic changes on surface.
- Concentrate product. Only water for diluting to microemulsion (1:15)

PACKAGING

25 L drums and 5 L cans
COLOUR: Milky liquid



CONSUMPTION:

20-40 L of microemulsion (**MAXCLEAR® INJECTION**/water = 1:15) per 1 m² cross-section (1m x 1m)
2-4 L of microemulsion per borehole &
10 boreholes spaced 10 cm apart/1 m².



MAXCLEAR® INJECTION CREAM

SILANE/SILOXANE INJECTION PASTE WITH CREAMY CONSISTENCY FOR TREATMENT OF RISING DAMPNSS



USES

- Damp-proof courses injected by caulking gun for masonry and walls (concrete, lime) with voids affected by capillary moisture.

ADVANTAGES

- Allows the substrate to breath.
- Suitable for walls subjected to high levels of dampness and substrates with voids.
- High penetration into substrate.
- No aesthetic changes on substrate.
- Ready to use product.

PACKAGING

600 mL bags
COLOUR:
Milky liquid

CONSUMPTION:
113 mL per borehole
(1 m length)



PRODUCTS AND SYSTEMS FOR REPAIR OF CONCRETE STRUCTURES AND CORROSION CONTROL OF REBARS

PRODUCTS FOR CORROSION PROTECTION

MAXREST® PASSIVE

WATER-BASED OXIDE-CONVERTER AND ANTI-CORROSION LIQUID SOLUTION FOR PROTECTION OF REBARS AND STEEL SURFACES



USES

- Oxide converter and protection of steel reinforcement.
- Anti-corrosion protection
- Adhesion promoter or priming on metal surfaces for subsequent coating systems.



ADVANTAGES

- Excellent adhesion on metal surfaces.
- Quick drying.
- Easy and ready to use.
- Environmentally friendly.

PACKAGING

1 kg bottles, and 5 kg jerry cans
COLOURS: Milky liquid

CONSUMPTION:
 2x 0,15 kg//m²



LEVELLING AND COSMETIC REPAIR MORTAR

CONCRESEAL® -5

POLYMER-MODIFIED CEMENT-BASED LEVELLING AND REPAIR MORTAR FOR NON-STRUCTURAL REPAIR JOBS (<5 MM)



USES

- Restoration and levelling of concrete and masonry units: small damages, edges, fissures, honeycombs, voids, and gravel pockets.

ADVANTAGES

- Good adhesion.
- Final finish similar to the original concrete.
- Good thixotropy.
- Odourless, non-toxic.
- Weathering resistant.

PACKAGING

25 kg bags
COLOURS: Grey and white

CONSUMPTION: 1x
 1,5 kg/m²·mm (x 1-5 mm)



THIXOTROPIC STRUCTURAL REPAIR MORTARS

MAXREST®

NON-SHRINK, THIXOTROPIC, FAST SETTING CEMENT-BASED STRUCTURAL REPAIR MORTAR



USES

- Restoration of structural concrete elements.
- Repair of pillars, lintels, raincaps and architectural concrete.
- Patching of cold joints and concave corners prior to waterproofing jobs.

ADVANTAGES



Fast setting
(15-20 min)



Only water for
mixing



Easy to
use

- Quick-setting time (15-20 min).
- High adhesion.
- Mechanical properties comparable or higher than concrete.
- Good thixotropy: 10-30 mm per layer.
- Does not shrink.

PACKAGING



25 kg bags, and 25 kg and 5 kg metal cans
COLOUR: Grey

VERSIONS: Anti-sulphate

CONSUMPTION: 1x 1,7 kg/m²·mm (x 5-30 mm)

APPLICATION METHOD



MAXRITE® -F

FIBER-REINFORCED, POLYMER-MODIFIED, NON-SHRINK, THIXOTROPIC, NORMAL SETTING CEMENT-BASED STRUCTURAL REPAIR MORTAR



USES

- Restoration of structural concrete elements.
- Repair of pillars, lintels, raincaps and architectural and concrete affected by repeated loads.
- Repair of horizontal concrete floors, ramps, slabs, and screeds, in parking, garages, swimming pools, water retaining structures.

ADVANTAGES

- High adhesion.
- Mechanical properties comparable or higher than concrete.
- Good thixotropy: 10-40 mm per layer.
- Does not shrink.

PACKAGING

25 kg bags
COLOUR: Grey
VERSIONS: Anti-sulphate

CONSUMPTION: 1x 1,9 kg/m²·mm (x 1-5 mm)



FLUID STRUCTURAL REPAIR MORTARS

MAXGROUT®

HIGH-FLUIDITY, NON-SHRINK, NORMAL SETTING STRUCTURAL REPAIR MORTAR



USES

- Concrete repairs by pouring into formwork: columns, beams, walls, piles, etc.
- Reinforcement of concrete.
- Anchoring of bolts, cables, etc., and filling of machinery foundation.
- Void-filling corrective process and consolidation under concrete slabs.

ADVANTAGES

- High early and ultimate strength.
- Very good adhesion.
- Non-shrink and slightly expansive,
- High cohesion of the fresh mortar without segregation or bleeding.

PACKAGING

- 25 kg bags
COLOUR: Grey
VERSIONS:
 - Anti-sulphate
 - Fast setting: MAXGROUT -HR
 - Fiber reinforced, big thickness/volume: **MAXGROUT® 200 EXPRESS**



CONSUMPTION:

2,0 kg/m²·mm (x 5-40 mm)
 25 kg fills 12,5-13,5 L, depending on amount of mixing water used

PRODUCTS AND SYSTEMS FOR SPECIAL APPLICATIONS

RESIN-BASED ANCHORING CARTRIDGES

MAXFIX® -V

FAST CURING, VINYL ESTER-BASED ANCHORING RESIN FOR METAL ELEMENTS, THREADED RODS AND REBARS INTO SOLID OR HOLLOW SUBSTRATE



USES

- Anchoring of anchor plates, angles, and profiles to concrete and masonry.
- Fastening of elements on common materials in construction: concrete, stone, masonry, hollow brick, solid brick, wood, etc.

ADVANTAGES



High adhesion



Easy to use



Cartridge for many times

- Quick job-place for anchored objects.
- No expansion strain into base material.

PACKAGING



420 mL two-component cartridges
COLOUR: Grey

CONSUMPTION:

Depending on the metrics and depth

APPLICATION METHOD



MAXFIX® -E

EPOXY-BASED ANCHORING RESIN FOR THREADED RODS AND REBARS INTO SOLID OR HOLLOW SUBSTRATE



USES

- Anchoring of anchor plates, angles, and profiles to concrete and masonry.
- Fastening of reinforcing bars, heavy machinery, cranes, cantilever connections, stud anchors for concrete slab-beam or wall-beam connections.

ADVANTAGES

- Packed resin into injection cartridge.
- Styrene/methacrylate-free.
- Short embedment withstands large loads.
- Long pot life.
- No expansion strain into base material.
- Withstands dynamic loads

PACKAGING



600 mL two-component cartridges
COLOUR: Grey

CONSUMPTION:

Depending on the metrics and depth



FLOORING SYSTEMS

MAXFLOOR®

WATER-BASED EPOXY COATING FOR FINISHING AND PAINTING OF PAVEMENTS AND SURFACES IN GENERAL



USES

- Protective and decorative coating for concrete floors, cement mortars or gypsum plasters walls or other surfaces.
- Protective coating of metal surfaces, steel, and other polished surfaces.

ADVANTAGES

- Excellent adhesion: concrete/metal.
- High mechanical strengths: excellent abrasion resistance.

PACKAGING

20 kg and 10 kg pre-weight sets

COLOURS: Green, red, grey, white, and brown.

VERSIONS:

- Transparent, Matt, Gloss

- 100% solid:

MAXEPOX® FLOOR



CONSUMPTION: 2x 0,3-0,4 kg/m²

MAXURETHANE® FLOOR

HIGH-PERFORMANCE, SOLVENT-FREE, FLEXIBLE, POLYURETHANE RESIN AS FLUID MORTAR, TROWELABLE MORTAR AND COATING FOR PROTECTION AND FINISH OF FLOORS



USES

- Flooring system with high mechanical and chemical performance .
- Anti-slip system for wet processing areas, steps, access ramps.
- Polyurethane flooring system for food industry.

ADVANTAGES

- High abrasion and wearing resistance.
- Very good chemical resistance.
- Continuous, seamless, uniform and compact surface: anti-dust finish. Easy cleaning and maintenance.
- Different colours and textures: multi-layered systems, fluid mortars, trowelable mortars and top-coating.
- Suitable for contact with food.
- Environmentally friendly.

PACKAGING

25 kg pre-weight sets

COLOURS: Grey, red, green, and white.

CONSUMPTION:

Coating: 2x 0,25-0,30 kg/m²

Anti-slip system*: 2x 0,5-0,6 kg/m²

Fluid mortar*: 1,6 kg/m²·mm (1-2 mm).

Dry mortar*: 1,9 kg/m²·mm (1-10 mm).

(*) **DRIZORO® SILICA** required.



MAXURETHANE® 2C

TWO-COMPONENT POLYURETHANE PROTECTIVE COATING WITH SATINE/ GLOSSY FINISH FOR OUTDOOR USE



USES

- Decorative and protective coating on floors and concrete structures.
- Anti-corrosion protection in metal structures.
- Protective coating against UV ray for epoxy or polyurethane resins in outdoor areas.
- Multilayer systems for wet processing areas, stairs, ramps.
- Protective coating on drainage boxes, retaining tanks or areas exposed to spillages.

ADVANTAGES

- Resistant to UV ray: colour stability.
- Withstands a wide temperature range and weathering.
- Excellent abrasion resistance
- Very good chemical resistance: water, seawater, wastewater, grease/oils, de-icing salts, diluted alkali/acid solutions.
- Quick drying.

PACKAGING

10 kg, 5 kg and 1 kg pre-weight sets

COLOURS: Grey, red, green, dark blue, light blue and transparent.

VERSIONS:

- Satin and Gloss

CONSUMPTION:

Priming: 1x 0,20 kg/m²

Coating: 2x 0,20-0,25 kg/m²

Anti-slip system*: 2x 0,25-0,3 kg/m²

(*) **DRIZORO® SILICA** required.



MAXFLOOR® POLY

COLD-APPLIED, ALIPHATIC POLYUREA COATING FOR CONCRETE FLOORS WITH VERY URGENT OPENING TO TRAFFIC

USES

- Flooring system with high mechanical, abrasion and chemical resistance and fast curing time
- High performance coating with excellent aesthetic decorative finish.
- Multilayer anti-slippery systems.

ADVANTAGES

- Extremely fast curing time: 3/4 h pedestrian/wheel traffic.
- Different colours and textures: multi-layered systems, fluid mortars, trowelable mortars and top-coating
- Excellent chemical resistance: oils/ greases, diesel, diluted acids/alkalis, etc.
- High abrasion resistance.
- Excellent weathering/UV resistant.

PACKAGING

10 kg pre-weight sets

COLOURS: Grey, white, red, green and transparent

CONSUMPTION:

Priming: 1x 0,20 kg/m²

Coat: 1x 0,5-0,6 kg/m²

Anti-slip system*: 0,6-0,8 kg/m²

Fluid mortar*: 1,7 kg/m²·mm (1-2 mm).

(*) **DRIZORO® SILICA** required.

PRODUCTS AND SYSTEMS FOR JOINTS

MAXJOINT® ELASTIC

TWO-COMPONENT ELASTOMERIC CEMENT-BASED MORTAR FOR SEALING JOINTS AND CRACKS SUBJECT TO MOVEMENT IN CONCRETE AND MASONRY



USES

- Sealing of joints:
 - Permanent immersion conditions: pipelines, water reservoirs, water treatment plants, etc.
 - Façades.
- Sealing of active cracks in concrete and masonry.

ADVANTAGES



Weathering resistant



Easy to use



Suitable for drinking water

- Excellent adhesion on damp surfaces.
- Good thixotropy: vertical, horizontal and overhead joints.
- Environmentally friendly

PACKAGING

10 kg and 4 kg pre-weight sets

COLOURS: Grey, ivory, blue, tile, red, jade green, brown and black

VERSION:

Fast curing:

MAXJOINT® ELASTIC EXPRESS



CONSUMPTION:

1 kg fills 0,79 L
0,3 kg/m per 10 mm x 10 mm joint

APPLICATION METHOD



MAXFLEX® 100 W

HIGH-PERFORMANCE, MODIFIED-POLYURETHANE ELASTOMERIC SEALANT FOR PERMANENT IMMERSION JOINTS AND CONTACT WITH POTABLE WATER



USES

- Sealing of joints and cracks in contact with potable water in storage tanks, channels, water treatment plants, etc.
- Sealing of joints in façades, curtain walls, windows and door outside frames, etc.
- Joints in contact with chemicals: storage bunds, chemical tanks, sewage treatment plants, etc.

ADVANTAGES

- Suitable for drinking water.
- Low elasticity modulus
- Suitable for vertical and horizontal joints.
- Good adhesion.
- High resistance to weathering and ambient agents.
- Good chemical resistance to sea water, sewage waters, diluted acids and alkalis, etc.

PACKAGING

600 mL bags and 300 mL cartridges

COLOUR: Grey



CONSUMPTION:

100 mL/m per 10 mm x 10 mm joint

MAXJOINT® -W SEAL

WATER SWELLING PROFILE FOR SEALING JOINTS AND CRACKS



USES

- Sealing of construction joints subject to permanent water immersion: reservoirs, dams, channels, tunnel, pipes, etc.
- Repair and sealing of fissures and cracks subject to water and joints in foundations, tunnels, galleries, passing pipes.

ADVANTAGES

- Great elasticity and water swelling capability (400 %).
- Suitable for high hydrostatic pressure.
- Long lasting and chemical stability: withstands dry/wet cycles.
- Available in a wide range of geometries and sizes.

PACKAGING

COLOUR: Blue

VERSIONS:

H-2005 (5 mm x 20 mm)

H-2010 (10 mm x 20 mm)

VERSIONS H x W

H-2005 5 x 20 mm

H-2010 10 x 20 mm



WORKABILITY, ADHESION AND PERFORMANCE ENHANCING AGENTS

MAXCRYL®

ACRYLIC LIQUID ADMIXTURE TO IMPROVE BONDING, WORKABILITY AND CURING OF CONCRETE AND MORTARS

USES

- Improved adhesion for mortars to smooth surfaces
- Cement-based bonding slurries
- Liquid admixture for mortars.
- Porosity sealer and primer

ADVANTAGES

- Stable and non-degradable under permanent moist conditions.
- Improves the workability of mortars.
- Better curing under high temperature.
- Increases the abrasion and wearing resistance.
- Improves waterproofness and chemical resistance.

PACKAGING

2L, 5L and 25 L jerry cans



CONSUMPTION:
Depending on use.

MAXBOND® LATEX

STYRENE-ACRYLIC LIQUID ADMIXTURE FOR MIXING OF BONDING SLURRIES AND IMPROVEMENT OF CONCRETES AND MORTARS

USES

- Cement-based bonding slurries.
- Liquid admixture for mortars.
- Porosity sealer and primer
- Admixture for tiling mortars.

ADVANTAGES

- Stable and non-degradable under permanent moist conditions.
- Better curing under high temperature.
- Increases the abrasion and wearing resistance, durability and weathering resistance for mortar and coatings.

PACKAGING

5 kg and 25 kg jerry cans



CONSUMPTION:
Depending on use.

BONDING AGENTS

MAXBOND®

ONE-COMPONENT ACRYLIC-BASED BONDING AGENT FOR CONCRETE, MORTAR, PLASTER AND CERAMIC FIXING

USES

- Bonding agent for screeds on existing concrete.
- Adhesion of renders and plasters over very porous and absorbent substrates.
- Application of cement-based layers over substrates with no porosity: polished concrete, natural stone, marble, etc.

ADVANTAGES



Weathering resistant



High adhesive strength



High mechanical strengths



- Large open time: 48-72 h
- High adhesion on absorbent, non-porous or polishing substrates.
- Alkali-resistant.
- Suitable for concrete, mortar, gypsum, stone, wood, glass,
- Suitable for damp surfaces.

PACKAGING



25 kg and 5 kg jerry cans
COLOUR: Pink

CONSUMPTION:
1 x 0,15-0,2 L/m²



MAXBOND® GRIP

UNIVERSAL ACRYLIC-BASED ADHESION PROMOTER WITH SILICA FILLER FOR CONCRETE, MORTAR AND FIXING OF CERAMICS

USES

- Priming for plaster or screed mortars on tiles, ceramic, vinyl, wood, brick, natural stone, etc...
- Priming for coatings on asphaltic or polyurethane-based adhesives.

ADVANTAGES

- One-component, ready for use with roller or a brush in a single layer.
- No substrate preparation required.
- Wide open time for using.
- Water-based product.

PACKAGING

5 kg and 25 kg drum
COLOUR: Grey

CONSUMPTION:
1x 0,2-0,4 kg/m²



MAXEPOX® PRIMER -W

REVESTIMIENTO EN BASE RESINAS EPOXI



USES

- Priming of concrete, mortar, metal, bricks, ceramic tile, etc for polyurethane and epoxy coatings in waterproofing, roofing, and flooring jobs.

ADVANTAGES

- Excellent adhesion.
- Suitable for wet surfaces
- Easy to apply.

PACKAGING

20 kg and 10 kg pre-weight sets
COLOUR: Grey

CONSUMPTION: 0,2-0,3 kg/m² per coat



MAXEPOX® BOND

TWO-COMPONENT EPOXY BONDING AGENT



USES

- Bonding of fresh concrete to roughened fully cured concrete.
- Bonding concrete to all type of construction materials such as stone, marble, wood, glass, etc.

ADVANTAGES



Weathering resistant



High adhesive strength



High mechanical strengths

- Very good resistance to chemical agents and ageing.
- Solvent-free and easy to apply.

PACKAGING



2 kg, 5 kg and 10 kg pre-weight sets
COLOUR: Grey

CONSUMPTION: 1x 0,3-1,0 kg/m²

TILING MORTARS & POINTING MORTARS

MAXKOLA® -M EXPRESS

CEMENT-BASED TILING MORTAR WITH LOW-POROUS ELEMENTS ON TRADITIONAL SUBSTRATES FOR URGENT PUTTING INTO SERVICE APPLICATIONS



USES

- Fixing of low/medium/high porosity on floors and walls, both indoor and outdoor uses.
- Outdoor tiling on facades, pedestrian pavements, etc.
- Tiling on substrates subject to permanent immersion: swimming pools, fountains, etc.

ADVANTAGES



High adhesive strength



Only water for mixing



Good thixotropy

- Urgent putting into service: pedestrian/road traffic (3/9 hours).
- Excellent water retention avoids dampen the substrate or tiles.
- Good initial adhesion.

PACKAGING

25 kg bags
COLOUR: Grey

CONSUMPTION:
1x 1,5 kg/m²·mm (3-8 mm)



APPLICATION METHOD



MAXKOLA® FLEX

**FLEXIBLE CEMENT-BASED ADHESIVE
MORTAR FOR LOW ABSORPTION TILES ON
NON-RIGID SUBSTRATES**



USES

- Fixing of low porosity or non-porous tiles, vitrified tile, glass mosaics, porcelain, marble, natural stone, etc for indoor or outdoor use, on floors and walls.
- Tiling of ceramic tiles on substrates subject to movements and/or water immersion: swimming pools, fountains, etc.

ADVANTAGES

- Very high adhesion on non-porous substrates and with good mechanical performance.
- Good flexibility, absorbing movements from substrate due to shrinkage processes, thermal dilatations, etc.
- Easy to use. Long open time.
- Excellent water retention avoids dampen the substrate or tiles.

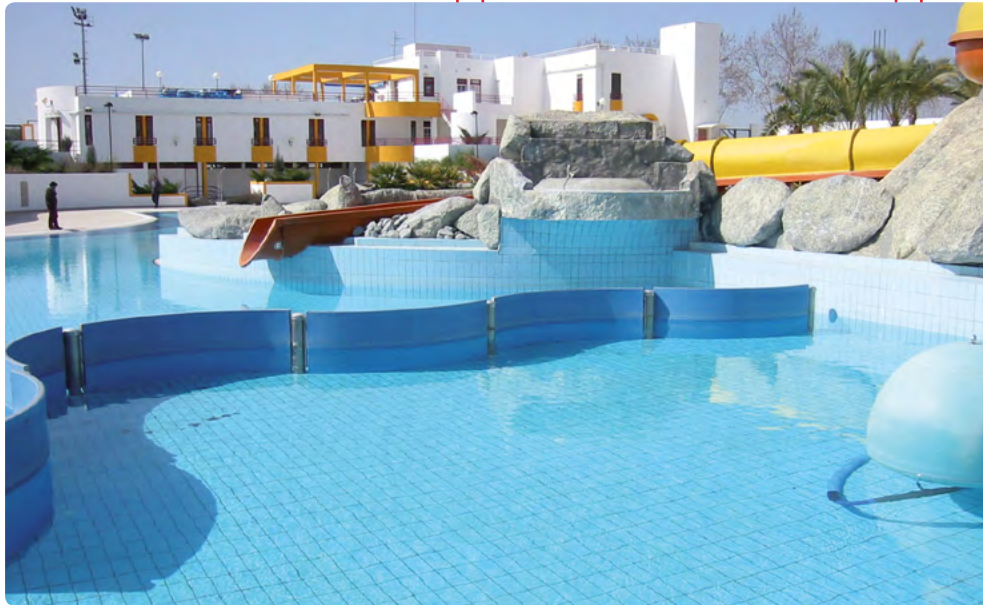
PACKAGING

25 kg bags

COLOURS:
Grey and White



CONSUMPTION:
1x 1,5 kg/m²·mm (1,5-6 mm)



MAXJOINT® (0-4) (4-20)

**WATERPROOF CEMENT-BASED POINTING
MORTAR FOR JOINTS IN SWIMMING-
POOLS, FACADES AND PAVEMENTS**



USES

- Pointing mortar for all kind of ceramic tile: spas, bathrooms, paths, etc.
- Restoration and pointing of joints in brick wall facades, masonry substrates, precast concrete, etc.
- Pointing in swimming-pools, wastewater treatment plants, aquariums, hospitals, schools, laboratories, industries, etc.

ADVANTAGES

- High microbiological resistance.
- Waterproof against rainwater.
- Excellent colour stability.

PACKAGING

5 kg metal drum and 25 kg bags

COLOURS: 10 different colours

VERSION:
POOL – high resistance
against the growth of algae/
fungi

CONSUMPTION:
(0-4): 1,7 kg/L - (4-20): 1,8 kg/L



MAXJOINT® FLEX

**HIGH PERFORMANCE, FLEXIBLE AND
WATERPROOF POINTING MORTAR FOR
SUBSTRATES SUBJECTED TO MOVEMENTS**



USES

- Pointing of brick, stone, concrete block, and all types of masonry for outdoor and indoor applications.
- Pointing of tiles over substrates subject to movements: facades, terraces, wood, floor heating systems, outdoor pavements, etc.

ADVANTAGES

- Suitable for pointing all type of ceramic tile (glazed or unglazed), marble, porcelain mosaic, etc.
- High microbiological resistance.
- Excellent bond strength.
- Suitable for joints up to 20 mm width and permanent immersion conditions.

PACKAGING

25 kg bags

COLOURS: Grey and White

VERSION:
POOL – high resistance
against the growth of algae/
fungi

CONSUMPTION:
1,7 kg/L



DRIZORO® IN THE WORLD. GLOBAL PRESENCE

Since the beginning of its activity, **DRIZORO®**, S.A.U. has developed the expansion of new markets and currently has a large international presence that takes the form of Delegations and/or Authorized Distributors in more than 35 countries on 5 continents.

Algeria, Arabia Saudi, Australia, Austria, Azerbaijan, Belarus, Belgium, Bulgaria, Canada, Colombia, Costa Rica, Croatia, Cyprus, Czech Rep., Ecuador, Estonia, Finland, France, Georgia, Germany, Greece, Holland, Hong Kong, Hungary, India, Iran, Ireland, Italy, Kuwait, Latvia, Lebanon, Lithuania, Malaysia, Malta, Mauritania, Mexico, Morocco, New Zealand, Norway, Panama, Philippines, Poland, Portugal, Puerto Rico, Qatar, Romania, Russia, Senegal, Slovakia, Sweden, Switzerland, Taiwan, Thailand, Turkey, UAE, Ukraine, United Kingdom, Vietnam,



CUSTOMER SUPPORT:

Our Technical Department is at your disposal for any questions that you may need solved easily and quickly by phone/fax:

+34 916 766 676

+34 916 776 175

+34 916 757 813 (Fax)

If you prefer, you can send your inquiries via email to:

info@drizoro.com

or, to the following postal address:

C/ Primavera 50-52

Polígono Industrial Las Monjas

28850 Torrejón de Ardoz - Madrid - SPAIN

For your convenience:

- Technical Bulletins,
 - Safety Data Sheets,
 - Declarations of Performance,
 - Jobs References,
 - New Products and Systems,
- and other useful and update information is available on **DRIZORO®** Web site:

www.drizoro.com



TECHNICAL SOLUTIONS



- ① Waterproofing of roofs and terraces
- ② Restoration of façades
- ③ Waterproofing of indoor wet areas: bathrooms, kitchens...
- ④ Waterproofing of foundations
- ⑤ Treatments for raising dampness
- ⑥ Structural strengthening and repair of concrete structures
- ⑦ Restoration and finishing of flooring
- ⑧ Waterproofing of basements and elevator pits
- ⑨ Waterproofing of swimming pools and drinking water tanks

DRIZORO[®]

Construction Products

DRIZORO, S.A.U.

C/ Primavera, 50-52 Parque Industrial Las Monjas

28850 TORREJÓN DE ARDOZ - MADRID (Spain)

Phone: (+34) 91 676 66 76 - (+34) 91 677 61 75 FAX: (+34) 91 675 78 13

Email: info@drizoro.com - Web: www.drizoro.com

Reproduction, manipulation by computer, and transmission in whole or in part in any form or by any means (electronically, mechanically, by photocopying, recording, or otherwise) without the prior written consent of the copyright owner are prohibited.