



MAXEPOX[®]

COLOR

COLOURED SILICA AGGREGATE FOR PREPARATION OF PAVEMENT MORTARS AND DECORATIVE TEXTURED FINISH OF FLOORS

DESCRIPTION

MAXEPOX[®] COLOR is a well-graded dry silica sand, with granulometry from 0,5 to 1,0 mm, specially designed to provide a textured decorative finish, combined with transparent epoxy mortar such as **MAXEPOX[®] MORTER**.

It is available in eight different colours to produce a wide variety and/or combination of decorative non-slip finishes on floors.

APPLICATION FIELDS

- Flooring systems for chemical and pharmaceutical industry, or other industrial facilities wherein a surface with a very high chemical resistance is required.
- Protective and decorative coatings for manufacturing plants, truck docks and warehouses.
- Multi-layered systems and/or anti-slip top coatings applied by dry-shake method.
- Flooring systems in big thickness with decorative finish for garages, hospitals, shopping centres, conference rooms, etc.

ADVANTAGES

- Effective cost solution, providing a coloured decorative self-finish with no need of further pigmented topcoats and saving labour cost.
- Excellent colour stability and UV resistance.
- Hard-wearing aggregate with high abrasion and chemical resistance.

APPLICATION INSTRUCTIONS

Consult our technical note *Preparation of concrete surfaces for application of epoxy-based coatings*. For use as aggregate when mixing epoxy-based mortars, add **MAXEPOX[®] COLOR** slowly and continuously on the epoxy binder such as **MAXEPOX[®] MORTER** (Technical Bulletin No. 76) and then, mix manually or preferably using a low speed drill (300-400 rpm. maximum), fitted with a disk mixer for about 2-3 minutes until achieving a homogeneous product in colour and appearance.

Do not mix for prolonged period nor use high-speed mixer, which may heat the mixture or introduce air bubbles.

For use in multilayer systems, spread **MAXEPOX[®] COLOR** immediately after applying the base-coat of resin, with adequate provision to cover the surface evenly without forming mounds or leaving areas without aggregate.

CONSUMPTION

Estimated consumption for **MAXEPOX[®] COLOR** as epoxy mortar when mixing with **MAXEPOX[®] MORTER** is about 1,8 kg/m².mm, using a binder resin:aggregate ratio of 1:6 by weight (0,3 kg/m².mm of binder resin). Estimated total consumption of epoxy mortar is about 2,1 kg/m².mm thickness.

Estimated consumption for **MAXEPOX[®] COLOR** spread using a broadcast technique over wet coatings is about 1,0-1,5 kg/m² per coat.

These figures are for guidance only and may vary depending on porosity, texture and conditions for substrate, and application method. Perform a preliminary test on-site to ascertain the total consumption exactly under jobsite conditions.

IMPORTANT INDICATIONS

- For specific mixing ratios, consumptions, and other information, consult the respective Technical Bulletins for products to be used with **MAXEPOX[®] COLOR**.
- Degree of surface texture is determined by the size of sand and its consumption, as well as the consumption and number of resin coats applied. Make a preliminary test on-site to determine the degree of texture required.
- **MAXEPOX[®] COLOR** must be completely dry before mixing or dusting on any epoxy or polyurethane coating.
- Do not add cements, solvents, thinners, aggregates, additives, or other compounds.
- For other uses not specified in this Technical Bulletin, further information or questions

regarding the application of the product, consult the Technical Department.

PACKAGING

MAXEPOX® COLOR is supplied in 25 kg bags. It is available in eight different colours, classified and named from No. 1 to No. 8.

STORAGE

MAXEPOX® COLOR can be stored indefinitely in its original unopened packaging, in a dry and covered place, protected from humidity.

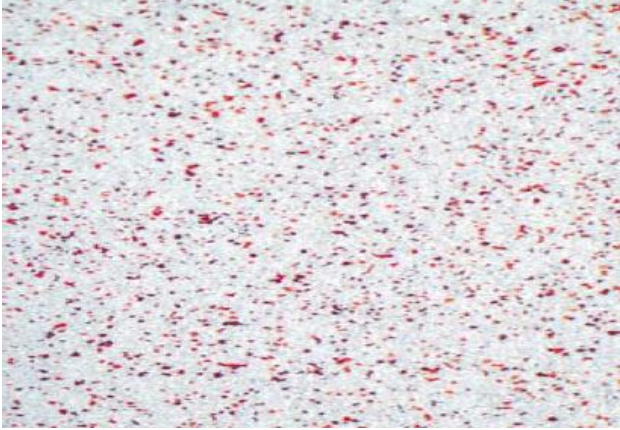
SAFETY AND HEALTH

MAXEPOX® COLOR is non-toxic but the usual precautions necessary for the use of epoxy and polyurethane products must be observed.

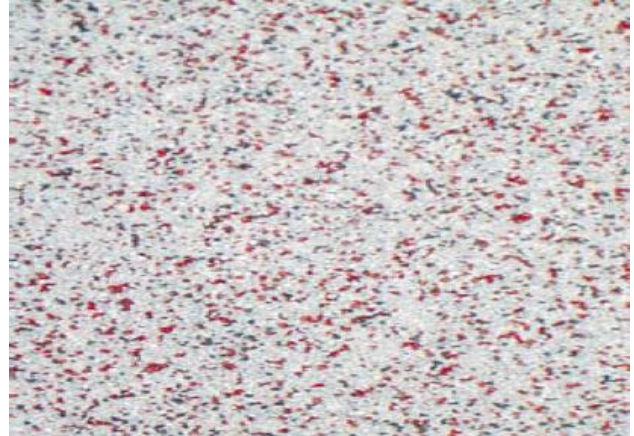
Consult the Material Safety Data Sheet for **MAXEPOX® FLOOR**.

Disposal of the product and its packaging should be carried out according to the current official regulations and it is the responsibility of the final user of the product.

MAXEPOX COLOR CHART



MAXEPOX COLOR n° 1



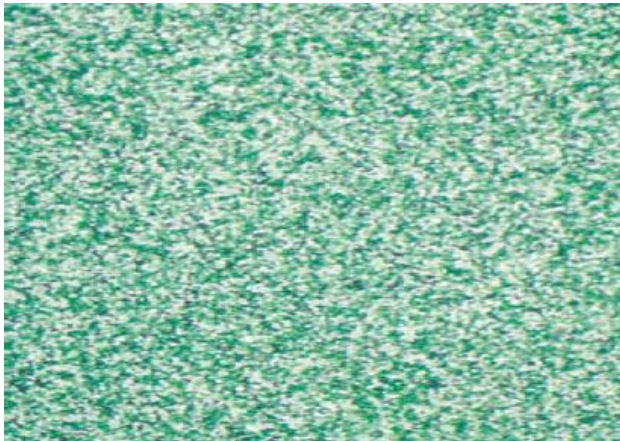
MAXEPOX COLOR n° 2



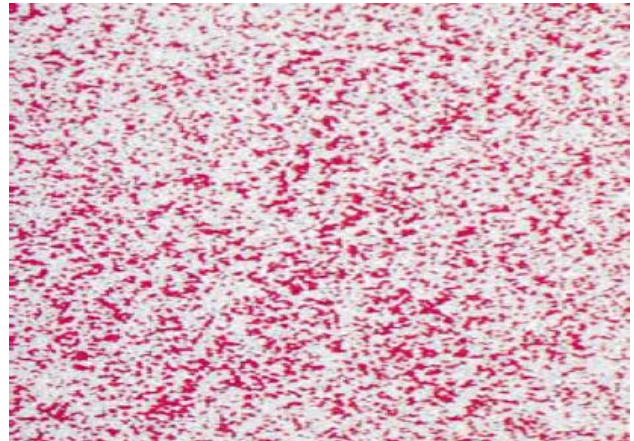
MAXEPOX COLOR n° 3



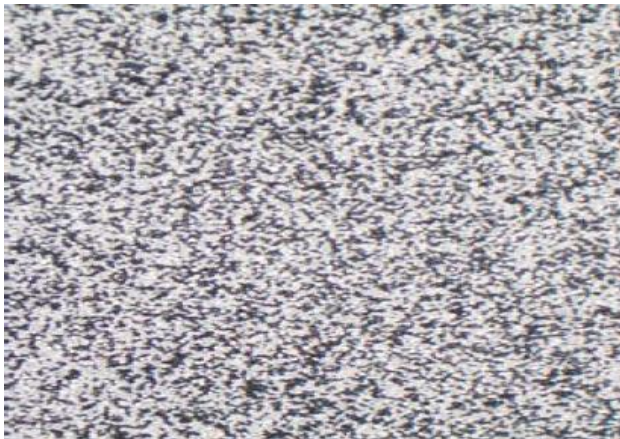
MAXEPOX COLOR n° 4



MAXEPOX COLOR n° 5



MAXEPOX COLOR n° 6



MAXEPOX COLOR n° 7



MAXEPOX COLOR n° 8

TECHNICAL DATA

Product characteristics	
Base of the aggregate	Siliceous
Size (mm)	0,5 to 1,0
Thickness / Consumption*	
Used with MAXEPOX® MORTER binder for epoxy-based mortar	
- Binder resin:aggregate ratio, (by weight)	1:6 to 1:8
- Thickness, (mm)	4,0-5,0
- Consumption using a ratio of 1:6, (kg/m ² ·mm thickness)	1,8
Used by dry-shake method, (kg/m ²)	1,0-1,5

(*)These figures are for guidance only and may vary depending on porosity, texture and conditions for substrate, and application method. Perform a preliminary test on-site to ascertain the total consumption exactly under jobsite conditions.

GUARANTEE

The information contained in this leaflet is based on our experience and technical knowledge, obtained through laboratory testing and from bibliographic material. **DRIZORO®, S.A.U.** reserves the right to introduce changes without prior notice. Any use of this data beyond the purposes expressly specified in the leaflet will not be the Company's responsibility unless authorised by us. We shall not accept responsibility exceeding the value of the purchased product. The data shown on consumptions, measurement and yields are for guidance only and based on our experience. These data are subject to variation due to the specific atmospheric and jobsite conditions so reasonable variations from the data may be experienced. In order to know the real data, a test on the jobsite must be done, and it will be carried out under the client responsibility. We shall not accept responsibility exceeding the value of the purchased product. For any other doubt, consult our Technical Department. This version of bulletin replaces the previous one.



DRIZORO, S.A.U.

C/ Primavera 50-52 Parque Industrial Las Monjas
28850 TORREJON DE ARDOZ – MADRID (SPAIN)
Tel. 91 676 66 76 - 91 677 61 75 Fax. 91 675 78 13
e-mail: info@drizoro.com Web site: drizoro.com

Reproduction, manipulation by computer, and without the prior written consent of the copyright owner are prohibited.

